

2022 Data Report

Contents

| | |
|--|-----------|
| Additional Information | 3 |
| Background Information | 3 |
| Population | 3 |
| Population by Race & Ethnicity by Year for the City of Geneva | 4 |
| Median Age | 5 |
| Median Household Income | 6 |
| Population Below Poverty Level by Race, Ethnicity, and Location | 7 |
| Family Poverty Rates By Community | 7 |
| Poverty Rates of Individuals by Community | 8 |
| Poverty Rates of Children (People Under 18) by Community | 8 |
| Place of Birth | 9 |
| Language Spoken at Home | 9 |
| Goal 1: Children are born healthy | 10 |
| Births by Location | 10 |
| Premature Births: Three-year Averages | 10 |
| Low Birth Weight Babies | 11 |
| Low Birth Weight Babies: Three-year Averages | 11 |
| Neonatal and Infant Mortality Rates | 12 |
| Neonatal and Infant Mortality Rates: Three-year Averages | 13 |
| Late or No Prenatal Care Births: Three-year Averages | 14 |
| Goal 2: Children have timely and appropriate preventative and primary health care | 15 |
| Weight Classification of Children in the Geneva City School District | 15 |
| Asthma, Hearing, and Vision | 16 |
| Goal 3: Families and caregivers have sufficient economic resources to meet their children's basic needs | 17 |
| Median Household Income | 17 |
| Family Poverty Rates By Community | 18 |
| Temporary Assistance for Needy Families (TANF) | 18 |
| Households with Cash Public Assistance Income | 19 |
| SNAP (Food Stamps) Using Ontario County Data | 20 |
| SNAP (Food Stamps) Using U.S. Census Data | 20 |
| Families Below Poverty Level | 21 |
| Education and Poverty Level, City of Geneva | 21 |
| Health Insurance Coverage | 22 |
| Medicaid or Self-pay Births: Three-year Averages | 23 |
| Homeless Children in Geneva by Accommodation Type | 24 |

| | |
|---|-----------|
| Goal 4: Children have safe, stable, and nurturing environments in their homes, community, and schools | 25 |
| Household Structure / Parental Employment | 25 |
| Household Structure for Families with Children Under 6 | 26 |
| Unmarried Parent Births: Three-year Averages | 27 |
| Reports of Abuse | 28 |
| Domestic Violence Incidents | 29 |
| Goal 5: Families and caregivers possess and practice child-rearing skills that promote optimal child development | 30 |
| Teen Pregnancies | 30 |
| Teen Birth Rate: Three-year Averages | 31 |
| Teen Pregnancy Rate: Three-year averages | 31 |
| School Experience Prior to Kindergarten | 32 |
| Educational Attainment of New Parents in Geneva | 33 |
| Goal 6: Children with special needs receive timely and appropriate services | 34 |
| Early Intervention for Preschoolers in Geneva | 34 |
| Special Education Services for Geneva Students | 34 |
| Committee for Preschool Special Education Referrals | 35 |
| Goal 7: Children have the opportunity to attend quality early childhood and care programs | 36 |
| Licensed Child Care Capacity in Geneva: Overview | 36 |
| Licensed Child Care Capacity in Geneva: A Closer look | 37 |
| Snapshot: One Center's Recent History | 38 |
| Wait Lists for Child Care Centers: Recent History | 38 |
| Goal 8: Children attend quality schools and succeed | 39 |
| Student Diversity by School District: 2022-2023 | 39 |
| Students by Race and Ethnicity: Shift in a Generation | 40 |
| Changing Student Demographics in Two Generations | 41 |
| Geneva High School Graduation Rates | 42 |
| Economically Disadvantaged Students in the Geneva School District | 44 |
| English Language Learners in the Geneva School District | 44 |
| English Language Learners: Comparison to Other Districts by Year | 45 |
| New York State ELA and Math Assessment Testing in the GSCD Grade 4 | 46 |
| New York State ELA and Math Assessment Testing in the GSCD Grade 8 | 47 |
| Households without Computers or Internet Access | 48 |
| Goal 9: The community and schools respect and foster diversity | 49 |
| The Community Has Activities and Events for Families—Availability of Services for Parents | 49 |
| The Community Has Activities and Events that are Oriented Toward Families and Celebrate Cultural Diversity | 50 |
| Goal 10: Families exercise their voices and their votes in strengthening the Geneva community | 51 |
| May School Budget Voter Turnout in the Geneva City School District | 51 |
| May School Budget Voter Comparison of GCSO to NYS and FLX | 52 |
| Expanded Data Links | 54 |
| Many Thanks | 56 |

Additional Information

For additional local community data, see the [GENEVA|2030 website](#) and look under the **Data** tab.

For a very complete general demographic overview of the City of Geneva using the latest census data, see [US Census Bureau: Geneva \(city\), Ontario County, New York](https://data.census.gov/cedsci/profile?g=0600000US3606928640): <https://data.census.gov/cedsci/profile?g=0600000US3606928640>.

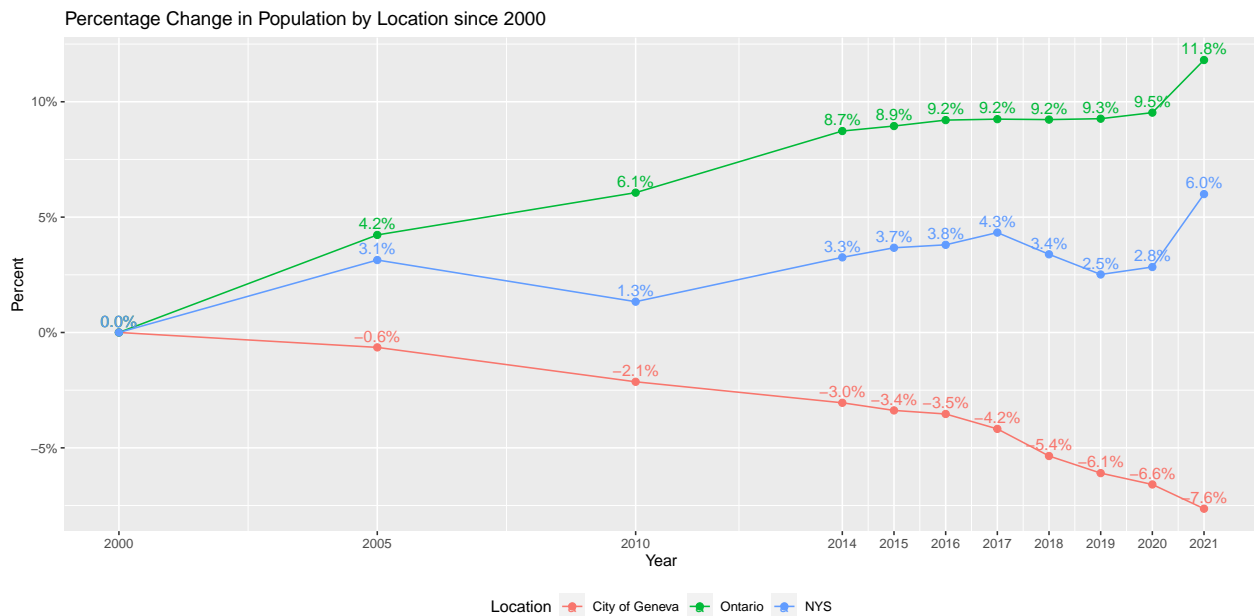
For a bit more detail see [Census.gov QuickFacts: New York; Ontario County, New York; Geneva city, New York; United States](https://www.census.gov/quickfacts/fact/table/NY,ontariocountynewyork,genecitynewyork,US): <https://www.census.gov/quickfacts/fact/table/NY,ontariocountynewyork,genecitynewyork,US>.

Background Information

Population

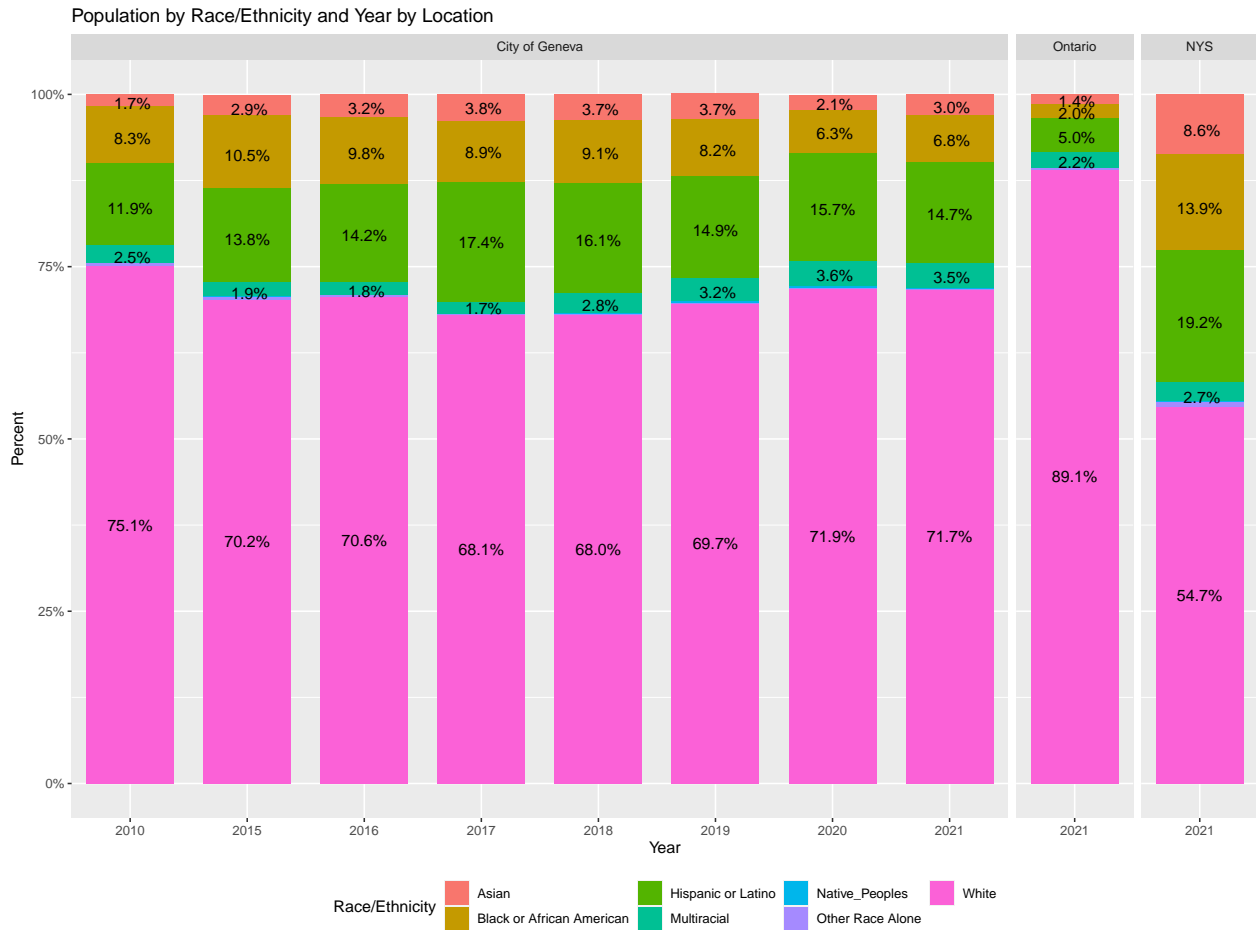
Table 1: Population Data by Location and Year

| Year | City of Geneva | Ontario | NYS |
|------|----------------|---------|------------|
| 2000 | 13,617 | 100,224 | 18,976,457 |
| 2010 | 13,326 | 106,298 | 19,229,752 |
| 2015 | 13,157 | 109,192 | 19,673,174 |
| 2020 | 12,720 | 109,774 | 19,514,849 |
| 2021 | 12,577 | 112,060 | 20,114,745 |



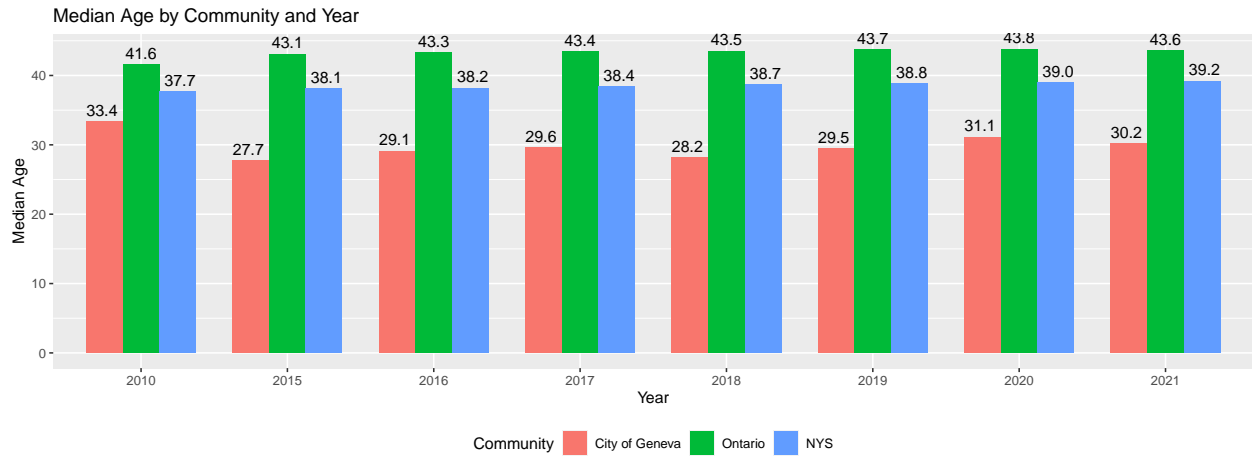
- Despite a common perception that migrant workers and other immigrant communities are increasing the population of Geneva, it is the only region examined that experienced a decrease in population from 2000 to 2020 and from 2010 to 2020.
- Sources: [ACS Demographic Characteristics for Geneva, 2021](#). Note: Data for earlier years may be obtained at this same link using the drop-down **Data Profiles**.

Population by Race & Ethnicity by Year for the City of Geneva



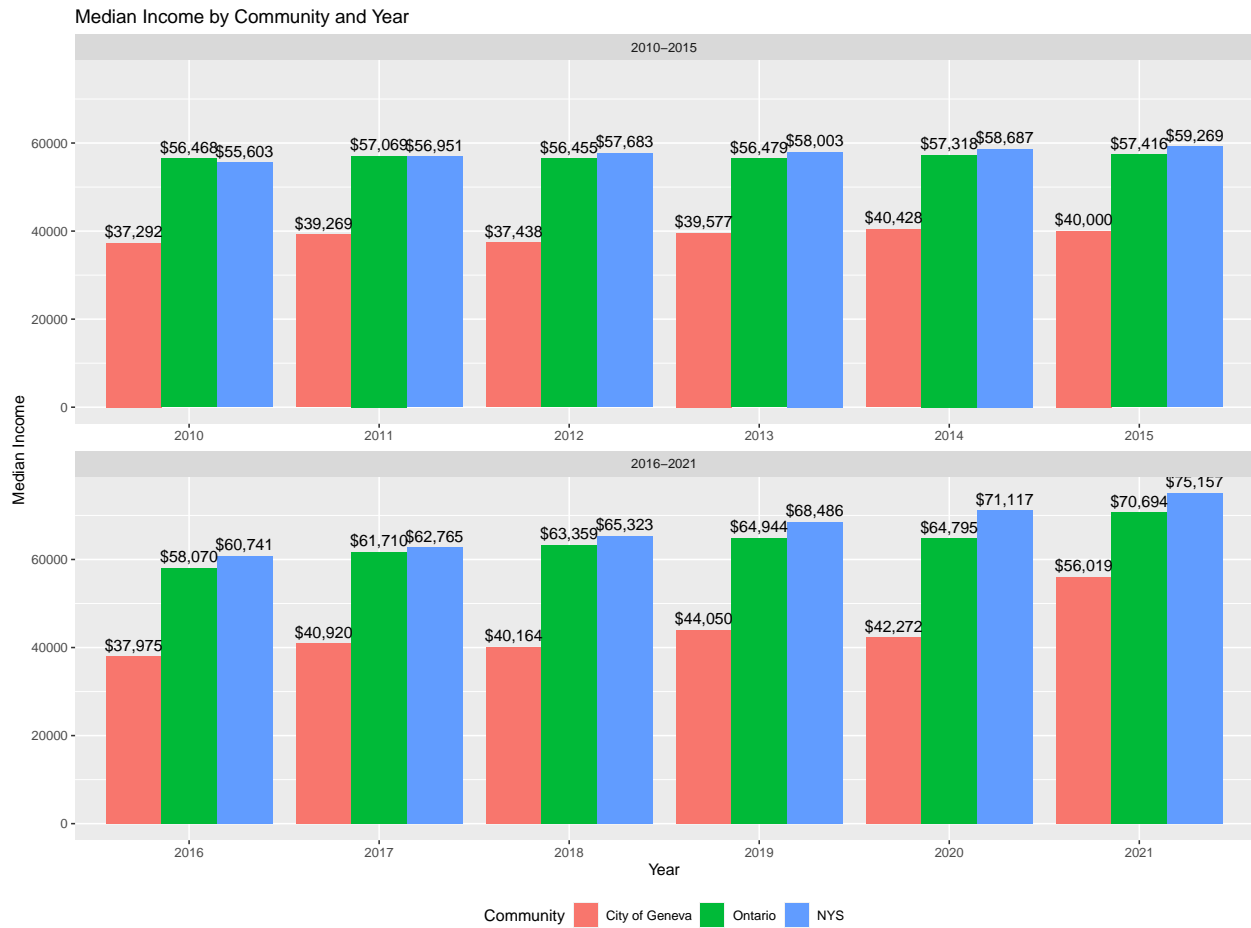
- Categories with less than 1% are shown but not labeled.
- In the last decade the population of Geneva has become more diverse with an increase in the Hispanic-Latino population and a drop in the black and white populations.
- The City of Geneva is significantly more diverse than Ontario county, but less diverse than New York as a whole. See Goal 6 for data on the diversity of Geneva’s public school students
- Sources: [ACS Demographic Characteristics for Geneva, 2021](#). Note: Data for earlier years may be obtained at this same link using the drop-down **Data Profiles**.

Median Age



- Geneva's population is significantly younger than that of Ontario County or New York State.
- This may be partially attributable to
 1. the lack of a sufficient housing options for senior citizens,
 2. and the ability of some senior citizens to change their state of residence to Florida and other low tax states.
- Sources: [ACS Demographic Characteristics for Geneva, 2021](#). Note: Data for earlier years may be obtained at this same link using the drop-down **Data Profiles** menu or at data and [Success for Geneva's Children 2021 Data Report](#).

Median Household Income



- Geneva (city) median household income historically has been less than two-thirds that of Ontario County or New York State. In 2021, it rose to roughly 80% of the median county household income and 75% of the median state household income.
- Because income tends to rise with age (until retirement), the lower median income in Geneva may be explained in part by the earlier observation that the median age is lower in Geneva than in Ontario County or New York State.
- Source: [ACS Economic Characteristics for Geneva, 2021](#). Note: Data for earlier years may be obtained at this same link using the drop-down **Data Profiles** menu.

Population Below Poverty Level by Race, Ethnicity, and Location

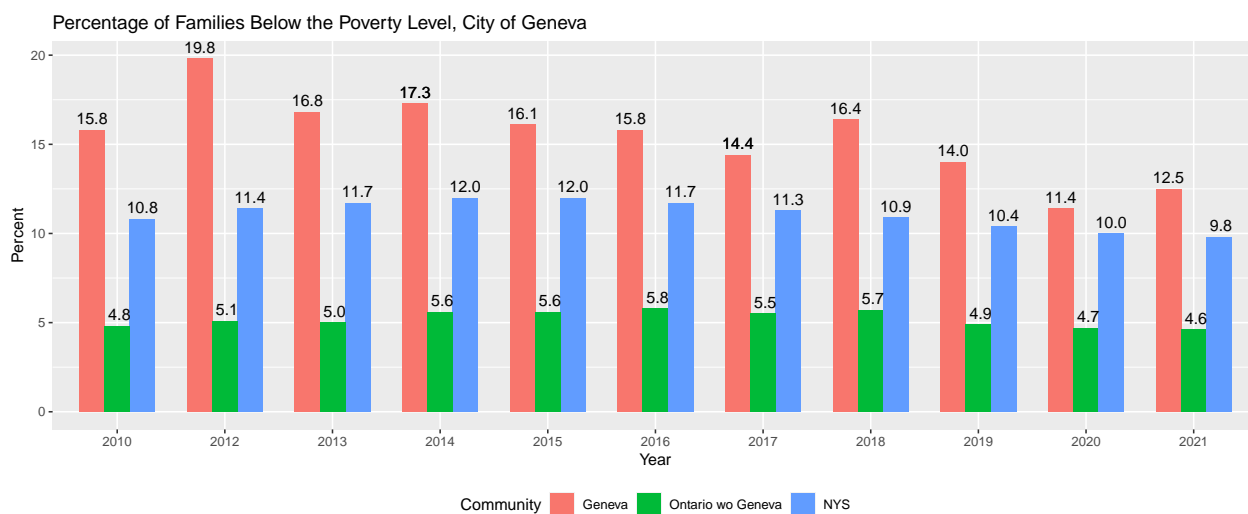
Table 2: Percentage of Population Below Poverty Level by Race/Ethnicity and Location, 2012

| Race | US | NYS | Ontario | Geneva |
|---------------------------------|------|------|---------|--------|
| American Indian alone | 27.8 | 25.7 | 25.6 | 50.0 |
| Asian alone | 12.1 | 17.3 | 11.6 | 57.9 |
| Black or African American alone | 26.5 | 22.6 | 40.7 | 50.5 |
| Hispanic or Latino alone | 24.1 | 25.3 | 26.4 | 44.4 |
| Some other race alone | 26.1 | 28.4 | 41.2 | 58.0 |
| Two or more races | 19.4 | 21.8 | 24.2 | 49.7 |
| White alone | 12.1 | 10.9 | 8.4 | 20.0 |
| White, Not Hispanic or Latino | 10.3 | 9.5 | 8.2 | 19.7 |

Table 3: Percentage of Population Below Poverty Level by Race/Ethnicity and Location, 2021

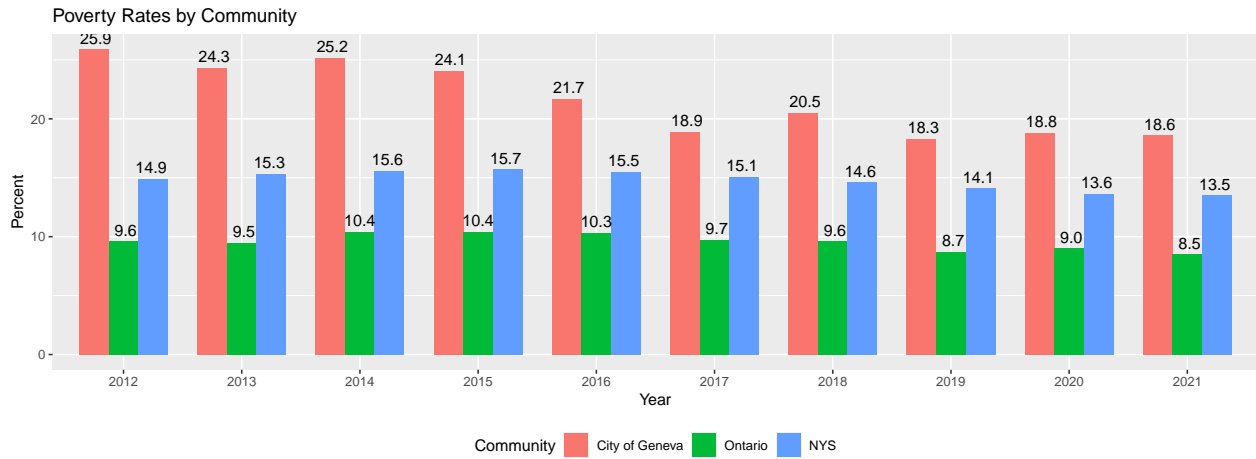
| Race | US | NYS | Ontario | Geneva |
|---------------------------------|------|------|---------|--------|
| White alone | 10.3 | 10.0 | 7.8 | 15.1 |
| Black or African American alone | 21.7 | 20.2 | 18.1 | 22.2 |
| American Indian alone | 23.4 | 23.2 | 28.9 | 0.0 |
| Asian alone | 10.3 | 14.1 | 4.7 | 11.1 |
| Some other race alone | 19.1 | 22.4 | 19.0 | 27.9 |
| Two or more races | 14.9 | 16.2 | 18.9 | 41.2 |
| Hispanic or Latino alone | 17.7 | 20.2 | 19.9 | 30.6 |
| White, Not Hispanic or Latino | 9.2 | 9.2 | 7.6 | 14.3 |

Family Poverty Rates By Community



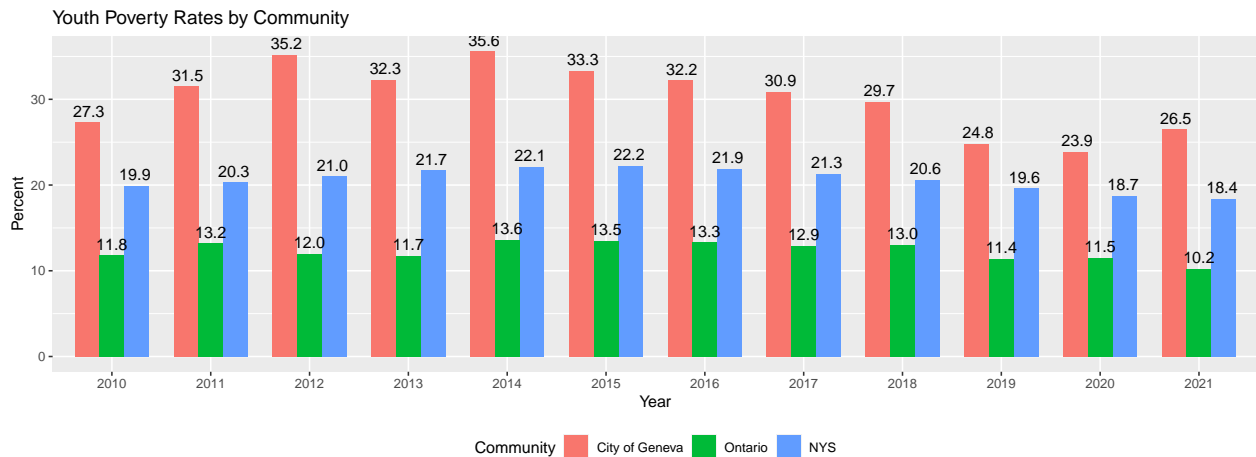
- Sources: [ACS S1701: Poverty Status in the Last 12 Months](#) and [ACS Selected Economic Characteristics for Geneva, 2021](#). Note: Data for earlier years may be obtained at this same link using the drop-down **Data Profiles** menu.
- Poverty thresholds vary by family composition and year. In 2021, the threshold for a four-person family with two children was \$26,500. (Source: [ASPE: 2021 Poverty Guidelines](#).)

Poverty Rates of Individuals by Community



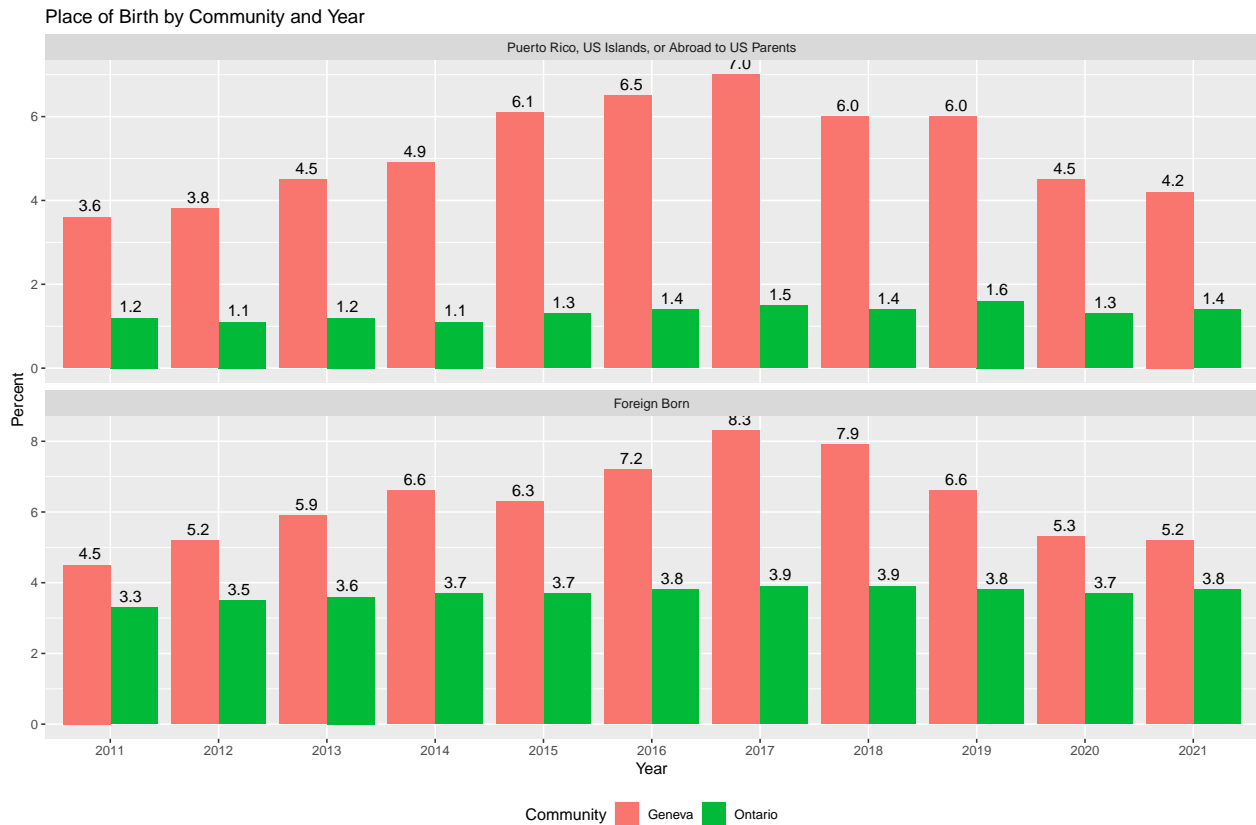
- The poverty rate in Geneva is higher than New York state as a whole and more than twice that of Ontario county.
- Source: [ACS: S1701 Poverty Status in the Past 12 Months, 2021](#). Note: Data for earlier years may be obtained at this same link using the drop-down **Data Profiles** menu.

Poverty Rates of Children (People Under 18) by Community



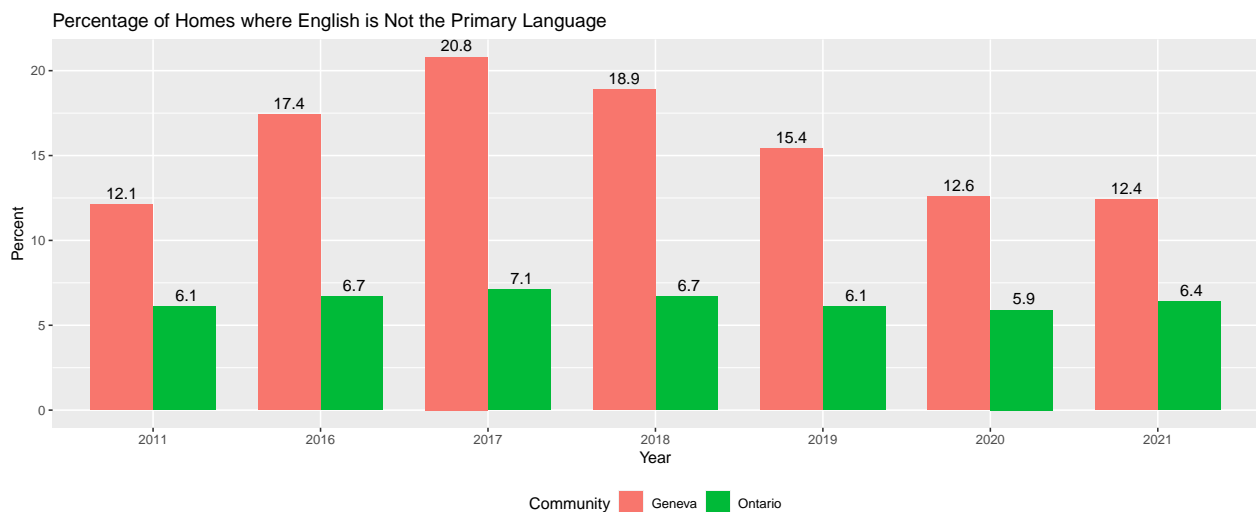
- Historically, the poverty rate among people under 18 years of age in the City of Geneva has remained 2.5 times that of Ontario County and 30% to 50% higher than that of New York State.
- Source: [ACS: S1701 Poverty Status in the Past 12 Months, 2021](#). Note: Data for earlier years may be obtained at this same link using the drop-down **Data Profiles** menu.

Place of Birth



- The richness of the Geneva community stems in part from the diverse origins of its members.
- Source: [ACS DP02: Selected Social Characteristics for Geneva, 2021](#). Note: Data for earlier years may be obtained at this same link using the drop-down Data Profiles menu.

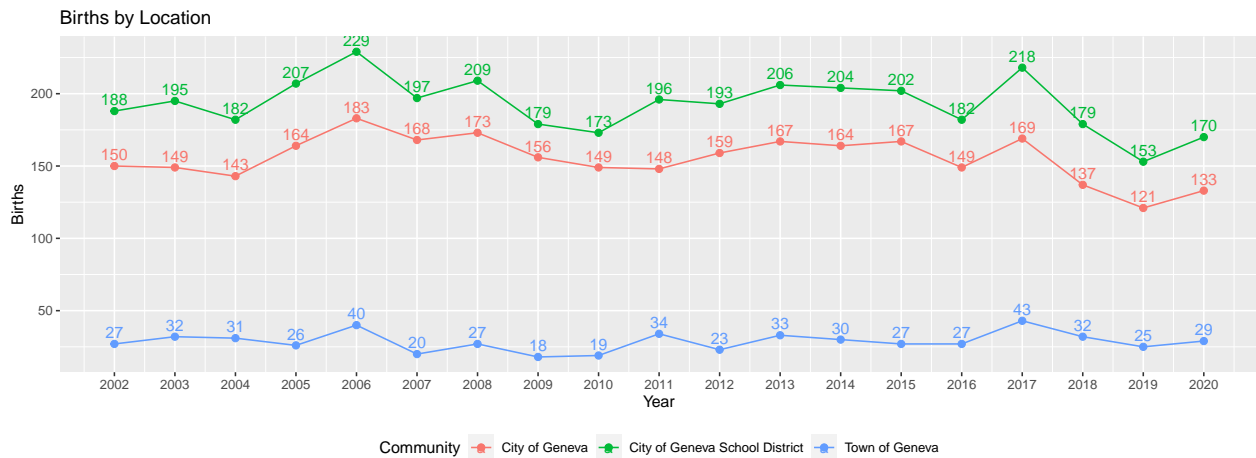
Language Spoken at Home



- The richness of the Geneva community is reflected in the languages of its people.
- Source: [ACS DP02: Selected Social Characteristics for Geneva, 2021](#). Note: Data for earlier years may be obtained at this same link using the drop-down Data Profiles menu.

Goal 1: Children are born healthy

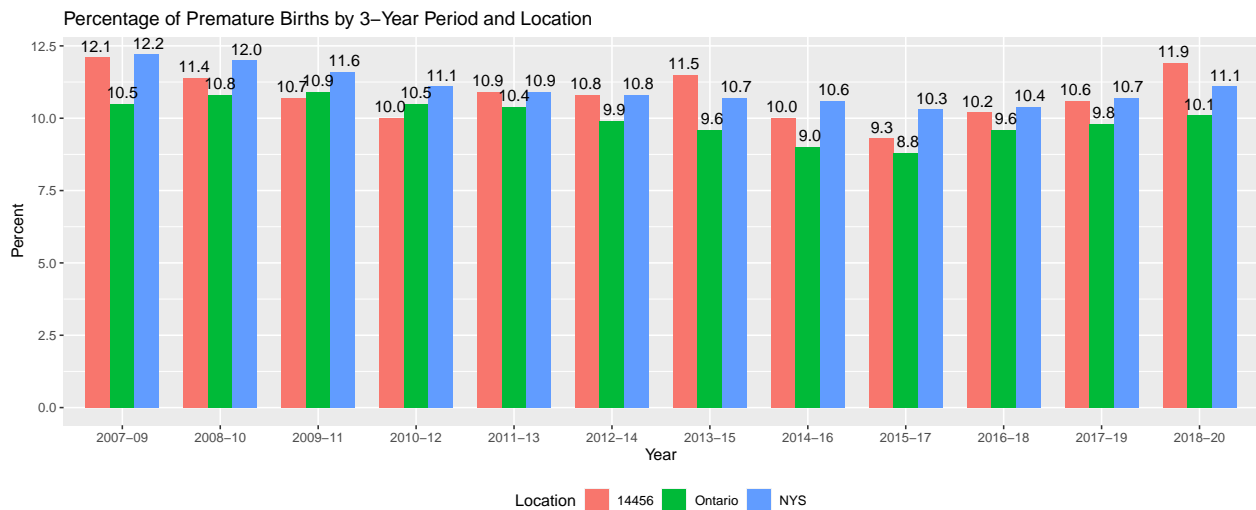
Births by Location



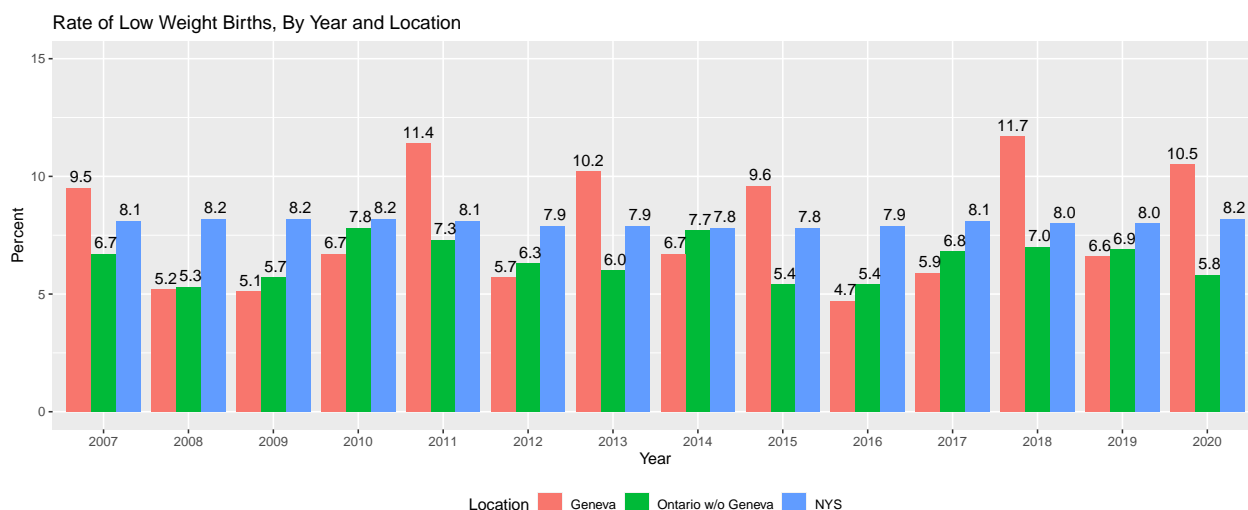
- Sources: [NYS DOH: Table 54: Total Live Births by School District Area, New York State](#) and [NYS DOH: Table 55: Live Births Minor Civil Division, 2007–2020](#)

Premature Births: Three-year Averages

- New York State defines **premature births** as births that occurred prior to 37 weeks of gestation.
- New York State also reports premature birth data as three-year averages by ZIP Code. The 14456 ZIP Code includes both the city and the town of Geneva.
- Sources: [County/ZIP Code Perinatal Data Profile - 2018-2020](#) and [New York State Regional Perinatal Data Profile - 2018-2020](#). Note: Data for earlier years may be obtained by modifying the years in the link.



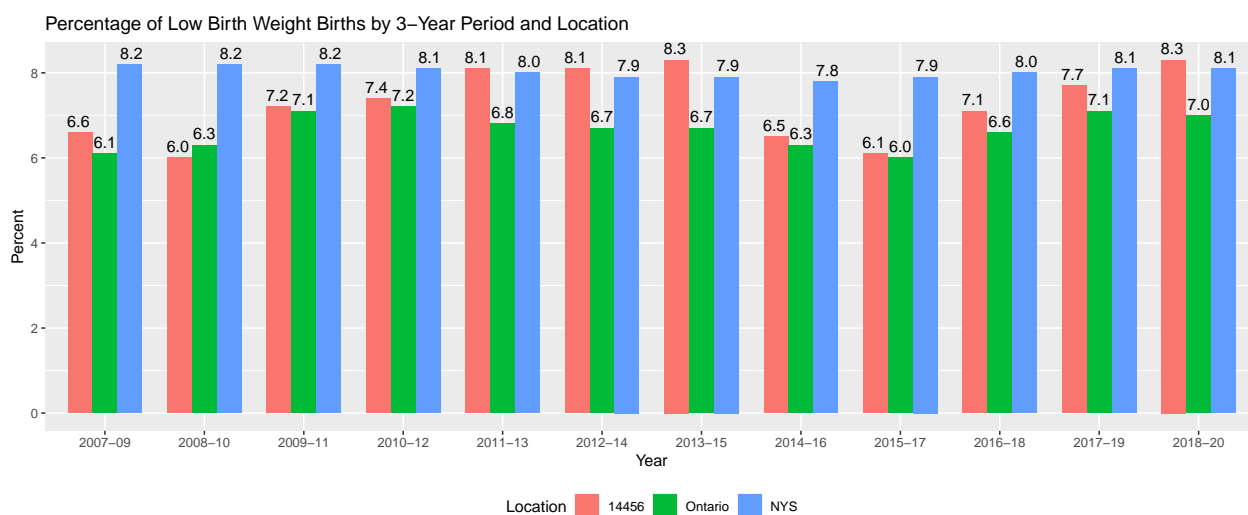
Low Birth Weight Babies



- Low birth weight babies are defined as those weighing less than 2500 grams (approximately 5.5 pounds).
- Sources for 2020 data (Use corresponding tables for other years.):
 - [Table 53: City and Village Profiles - Selected Statistics for Cities and Villages over 10,000 Population, New York State 2020](#) (see both upper and lower halves of this table),
 - [Table 11: Low Birthweight Live Births by Mother’s Age and Resident County New York State - 2020](#),
 - [Table 7: Live Births by Mother’s Age and Resident County, New York State 2020](#).

Low Birth Weight Babies: Three-year Averages

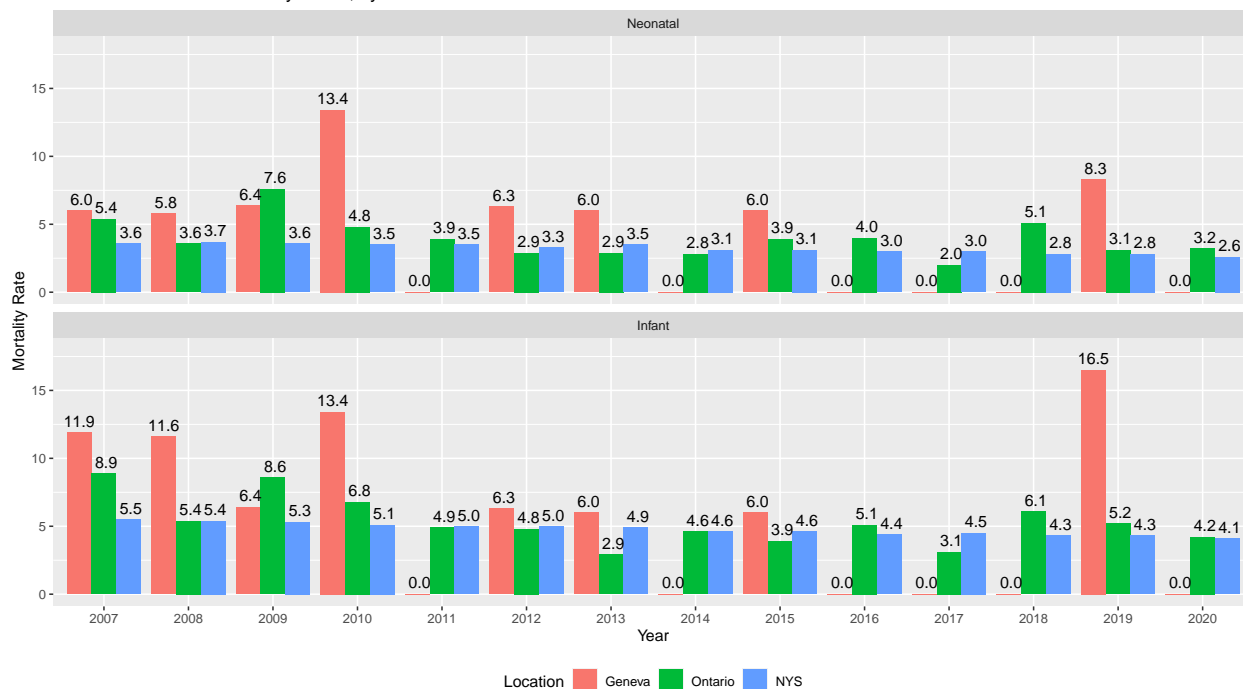
- New York State also reports low birth weight births (births weighing between 100–2499 grams) as three-year averages by ZIP Code. The 14456 ZIP Code includes both the city and the town of Geneva.
- Sources: [County/ZIP Code Perinatal Data Profile - 2018-2020](#) and [New York State Regional Perinatal Data Profile - 2018-2020](#). Note: Data for earlier years may be obtained by modifying the years in the link.



Neonatal and Infant Mortality Rates

- The **infant mortality rate** is the number of deaths under 1 year of age per 1,000 live births.
- The **neonatal mortality rate** is the number of deaths under 28 days of age per 1,000 live births. These deaths are included in the infant mortality rate.

Neonatal and Infant Mortality Rates, by Year and Location



- Note: In the period listed, there has never been more than two infant deaths in a year in Geneva.
- **⚠** Since there are roughly 150 births in Geneva per year, a difference of 1 death changes the mortality rate by more than 6 per 1,000. For this reason, it makes sense to compare average infant mortality rates over longer time intervals. See the data on the next page.
- Sources for all data in this section:
 - For 2020 state and county data use [Table 45: Infant Deaths, Neonatal Deaths, Post Neonatal Deaths and Perinatal Mortality by Resident County, New York State, 2020](#). Use corresponding tables for other years.
 - For Geneva use [Table 53: City and Village Profiles - Selected Statistics for Cities and Villages over 10,000 Population, New York State 2020](#) (see both upper and lower halves of this table).
 - [Table 9: Live Births by Race/Ethnicity and Resident County, New York State 2020](#).

Neonatal and Infant Mortality Rates: Three-year Averages

- Unlike earlier data sets, New York State reports these data by ZIP Code. The 14456 ZIP Code includes both the city and the town of Geneva.
- Because there are relatively few births in Geneva a difference of 1 or 2 deaths significantly changes the mortality rates. For this reason, it makes sense to compare average mortality rates over longer time intervals. The New York State computes such mortality rates over three-year intervals. Thus, a bar denoted 2017–19 represents the three-year time period 2017, 2018, and 2019. (See the previous page for annual data.)
- The **infant mortality rate** is the number of deaths under 1 year of age per 1,000 live births.
- The **neonatal mortality rate** is the number of deaths under 28 days of age per 1,000 live births. These deaths are included in the infant mortality rate.

Three-year Average Neonatal and Infant Mortality Rates, By 3-Year Period and Location

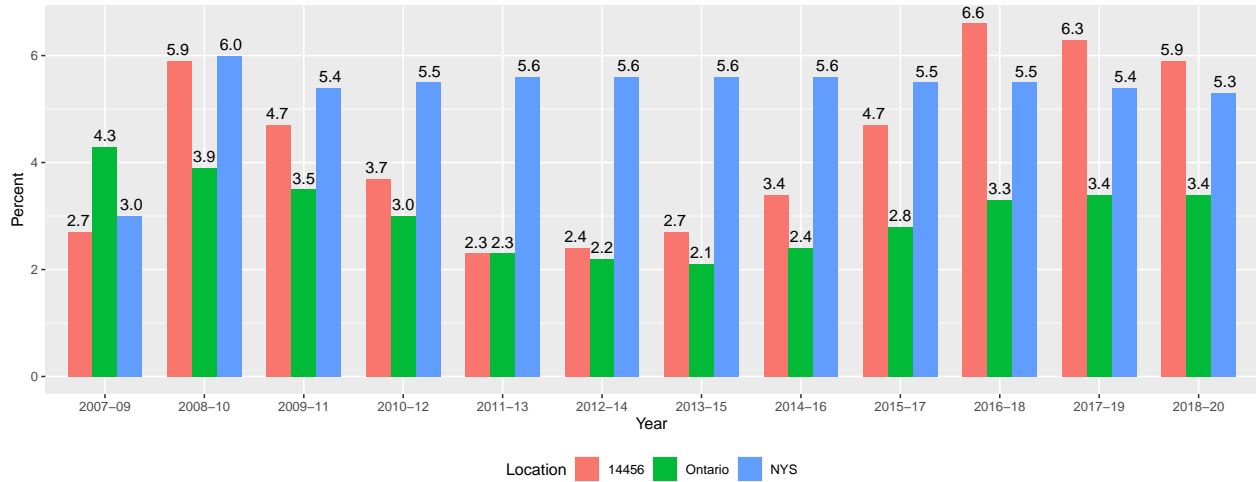


- Source: [County/ZIP Code Perinatal Data Profile - 2018-2020](#) and [New York State Regional Perinatal Data Profile - 2018-2020](#). Note: Data for earlier years may be obtained by modifying the years in the link.

Late or No Prenatal Care Births: Three-year Averages

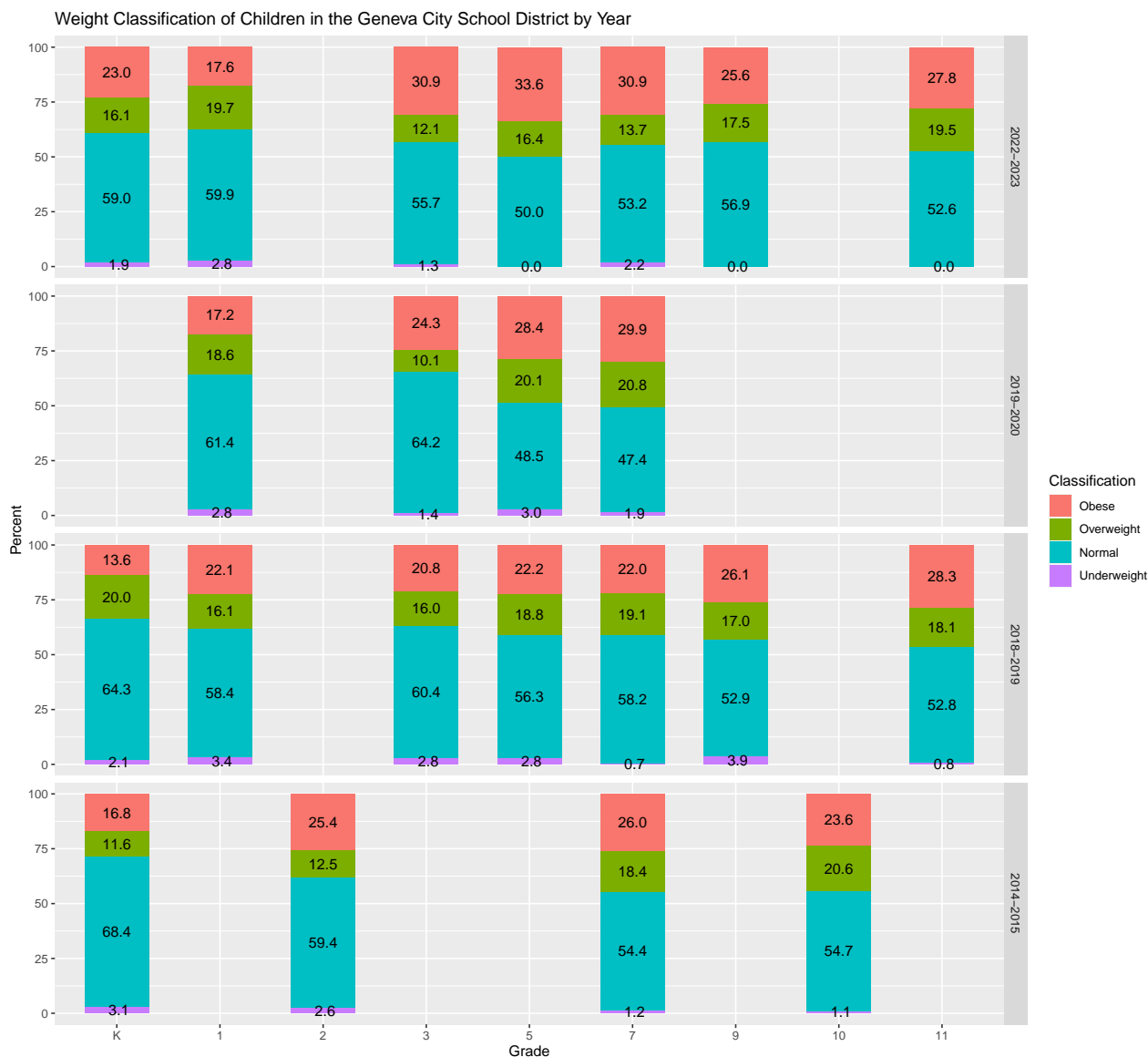
- **Late or no prenatal care births** are births where prenatal care was initiated during the third trimester of pregnancy or not at all.
- New York State reports late or no prenatal care birth data as three-year averages by ZIP Code. The 14456 ZIP Code includes both the city and the town of Geneva.
- Sources: [County/ZIP Code Perinatal Data Profile - 2018-2020](#) and [New York State Regional Perinatal Data Profile - 2018-2020](#). Note: Data for earlier years may be obtained by modifying the years in the link.

Percentage of Late (third trimester) or No Prenatal Care Births by 3-Year Period and Location



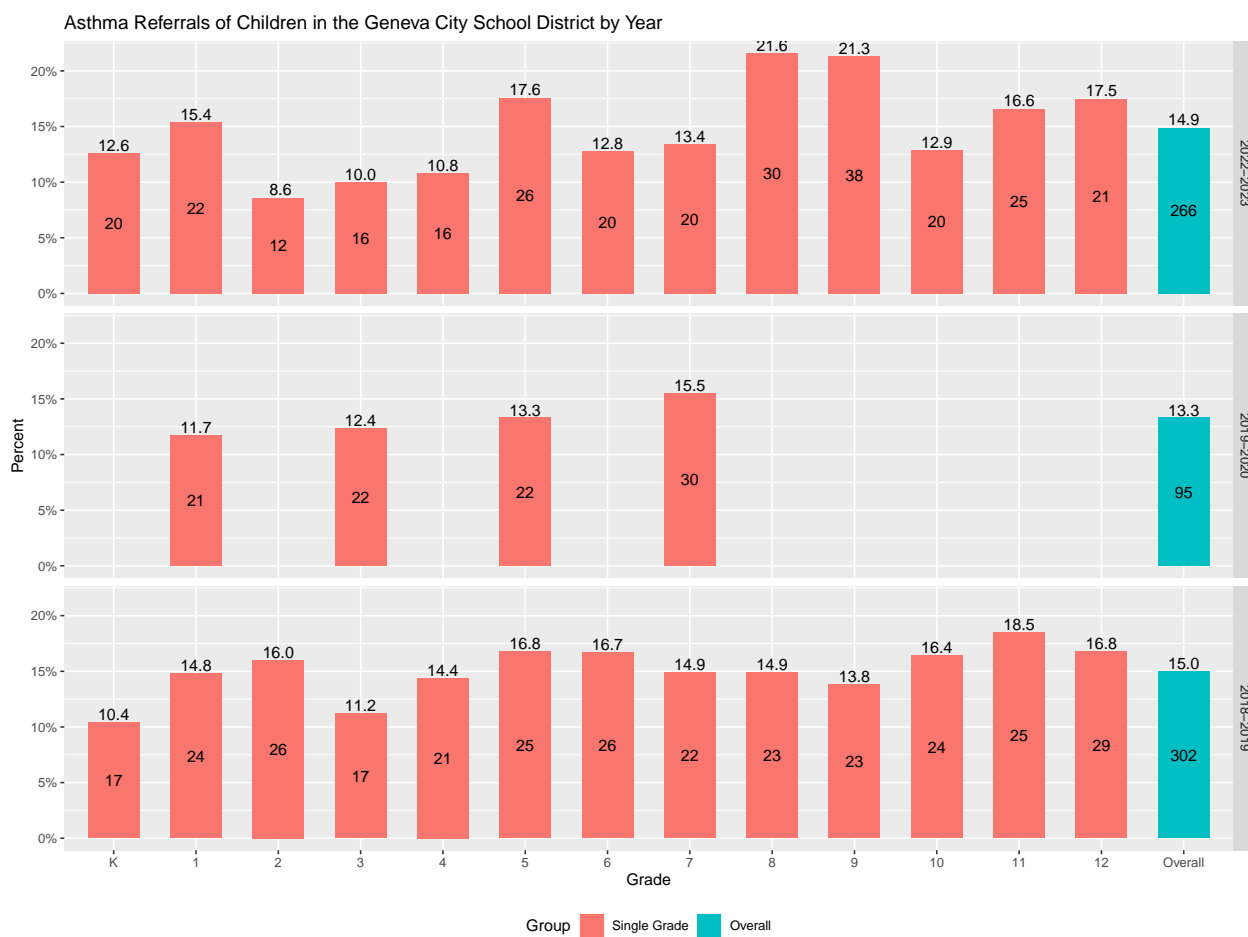
Goal 2: Children have timely and appropriate preventative and primary health care

Weight Classification of Children in the Geneva City School District



- Meaningful data for the 2020–2021 school year is unavailable due to the COVID-19 pandemic.
- The center for Disease Control (CDC) classifies weight status according to a BMI scale. Obese: \geq 95th percentile, overweight: between the 85th and 95th percentile, normal weight: between the 5th and 85th percentile and underweight: $<$ 5th percentile.
- Older students tend to be somewhat more overweight and more obese.
- Note: Percentages are based on the 94.6% of the school-aged children with recorded classifications in 2022-2023, 93.6% in 2019-2020, 92.5% in 2018-2019, and 93.1% in 2014-2015.
- Source: Geneva City School District, Nursing Department.

Asthma, Hearing, and Vision



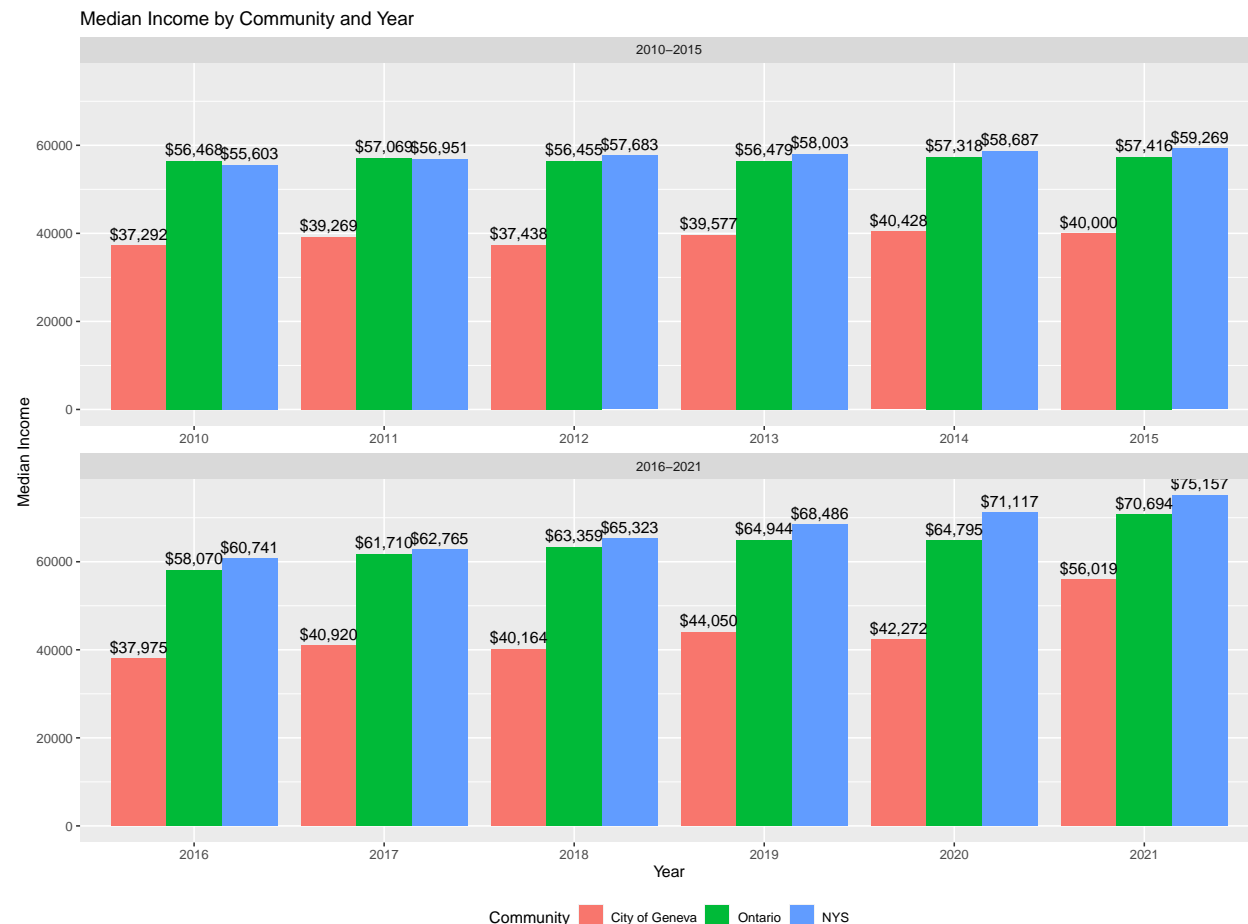
- The number of asthma diagnoses for each grade is listed within each bar.
- Meaningful data for the 2020–2021 school year is unavailable due to the COVID-19 pandemic.
- Asthma is a chronic lung disease that makes it harder to move air into and out of your lungs. Certain exposures to asthma triggers can cause asthma flare-ups. Asthma can be a life-threatening disease if not properly managed.

Asthma is the most common chronic condition among children, currently affecting an estimated 5.5 million children under 18 years. In 2018, 2.2 million children aged 5–17 years missed more than 7.9 million school days. (See [American Lung Association](#).)

- In the 2015–2016 school year, a total of 204 or 13.3% of all students in elementary and middle school in Geneva were diagnosed with asthma. In 2018–2019 the rate was 15.0%.
- In 2022–2023, 16 students (1.5%) in grades K, 1, 3, 5, 7, 9, and 11 were given vision referrals and 1 student was given a hearing referral.
- In 2021–2022, 17 students (2.3%) in grades K, 1, 3, 5, and 7 were given vision referrals and no students in grades K, 1, 3, 5, and 7 were given hearing referrals.
- In 2020–2021 the vision and hearing screenings were waived by New York because of the COVID-19 pandemic.
- In 2018–2019, 28 students (4.6%) in grades K, 1, 3, 5, and 7 were given vision referrals and no students in grades 1, 3, 5, and 7 were given hearing referrals.
- Source: Geneva City School District, Nursing Department.

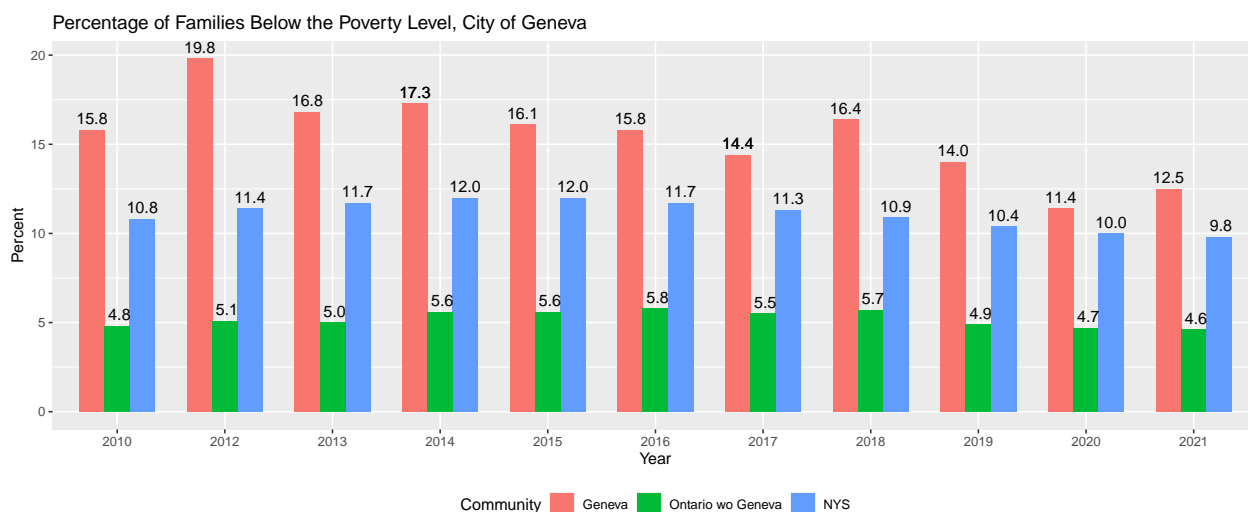
Goal 3: Families and caregivers have sufficient economic resources to meet their children’s basic needs

Median Household Income



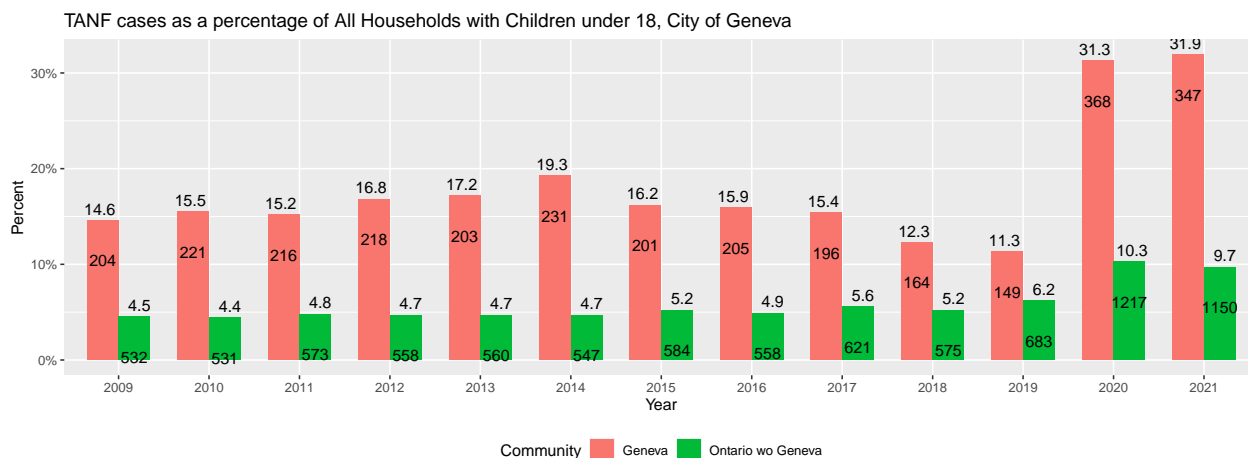
- Geneva median household income is roughly two-thirds that of Ontario County or New York State.
- Because income tends to rise with age (until retirement), the lower median income in Geneva is explained in part by the earlier observation that the median age is lower in Geneva than in Ontario County or New York State.
- Source: [ACS Economic Characteristics for Geneva, 2020](#). Note: Data for earlier years may be obtained at this same link using the drop-down **Data Profiles**.

Family Poverty Rates By Community



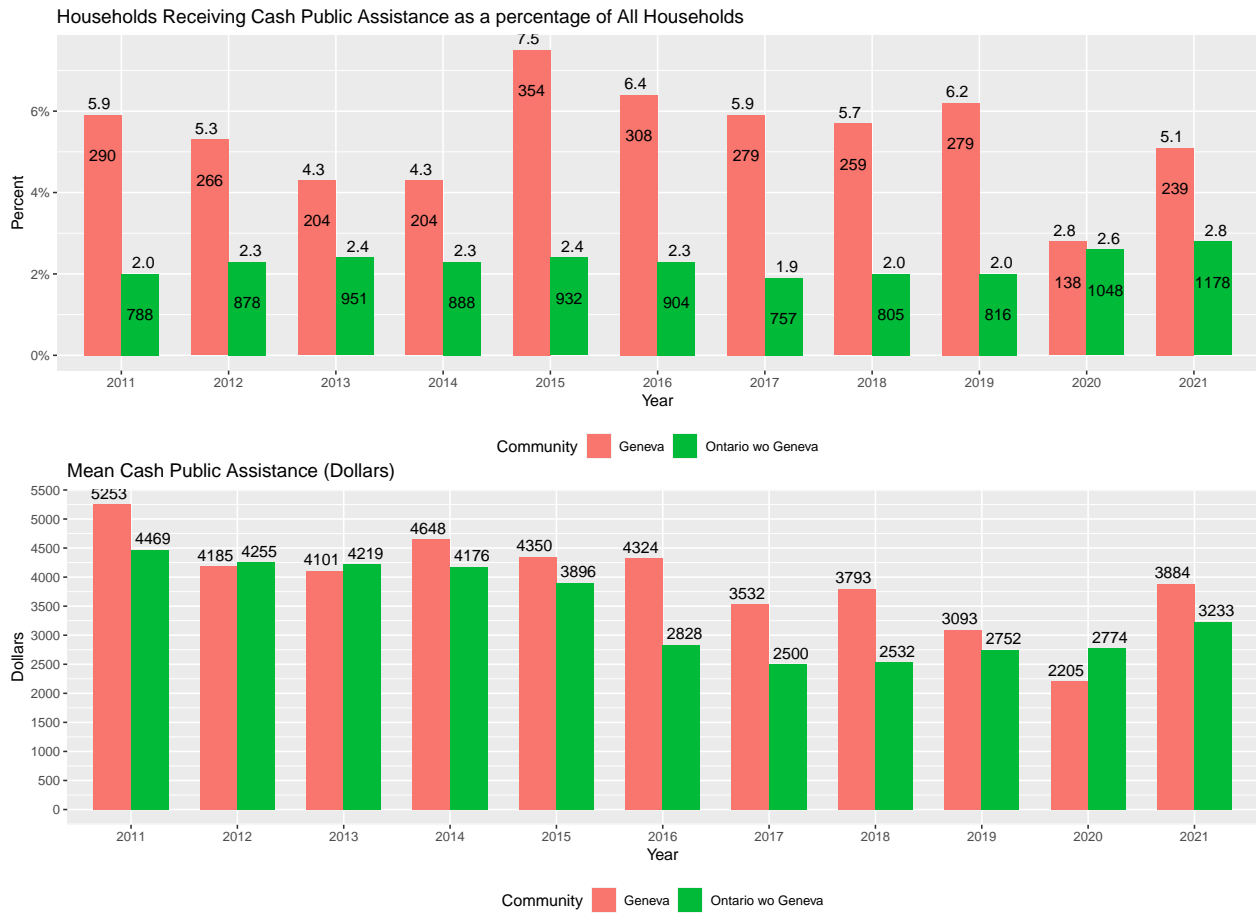
- Sources: [ACS S1701: Poverty Status in the Last 12 Months](#) and [ACS Selected Economic Characteristics for Geneva, 2021](#). Note: Data for earlier years may be obtained at this same link using the drop-down **Data Profiles** menu.
- Poverty thresholds vary by family composition and year. In 2021, the threshold for a four-person family with two children was \$26,500. (Source: [ASPE: 2021 Poverty Guidelines](#).)

Temporary Assistance for Needy Families (TANF)



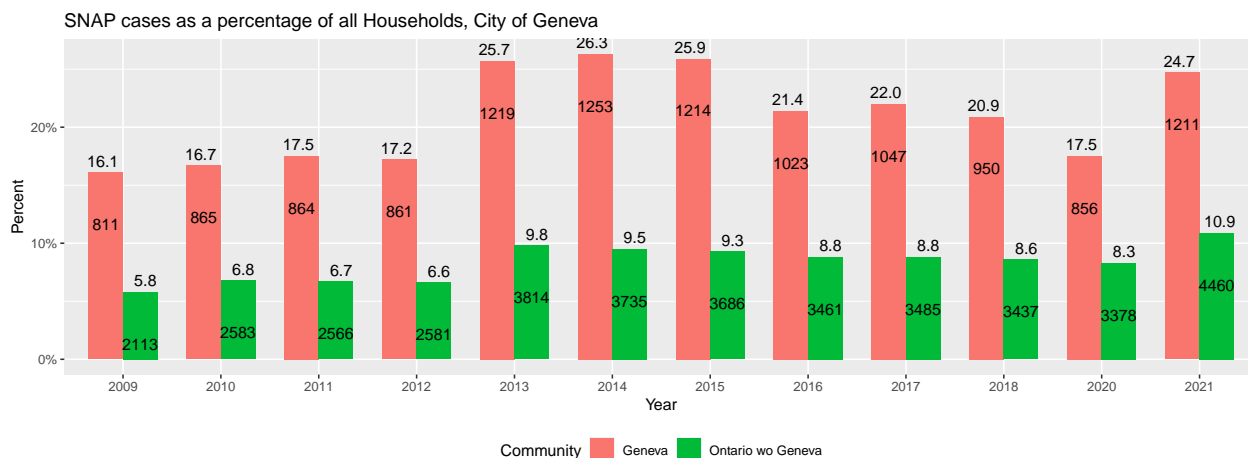
- TANF refers to Temporary Assistance for Needy Families, which provides financial assistance to economically disadvantaged households with children under the age of 18.
- Historically, the TANF use rate among Geneva households was consistently above three times that of the rest of Ontario County. Just prior to the COVID-19 pandemic, that rate began to drop, but has now risen again. This rise may be temporary and directly a result of the COVID-19 pandemic emergency response by Ontario County Department of Social Services.
- Source: TANF data are from Ontario County Department of Social Services, Workforce Development and Youth Bureau Annual Reports, see <http://www.co.ontario.ny.us/118/Social-Services>.
- Source: Data for households with children under 18 are from [ACS DP02: Selected Social Characteristics for Geneva, 2021](#). Data for earlier years may be obtained at these same links using the drop-down **Data Profiles** menu.

Households with Cash Public Assistance Income



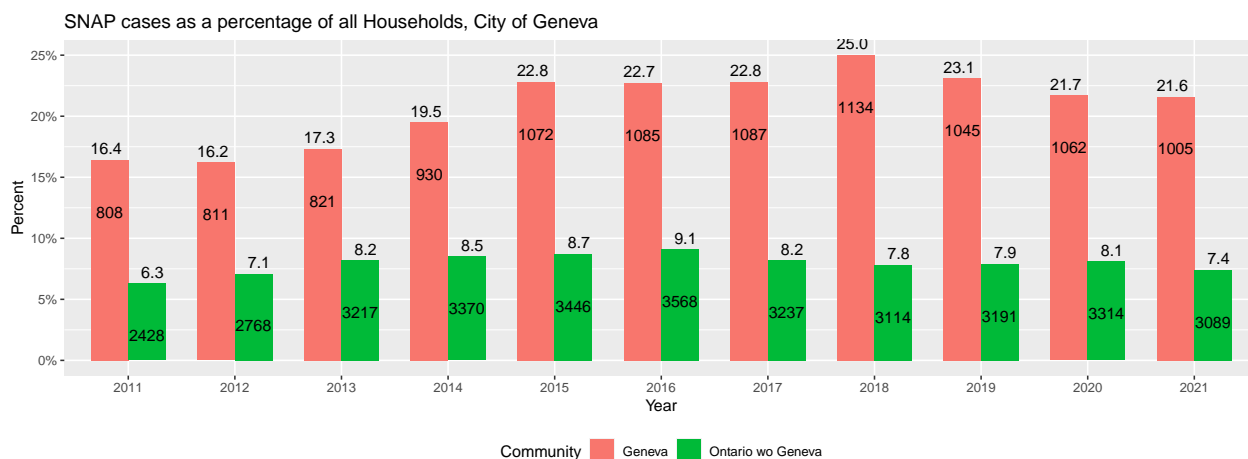
- Source: [ACS Selected Economic Data for Geneva, 2021](#). Note: Data for earlier years may be obtained at this same link using the drop-down Data Profiles menu.

SNAP (Food Stamps) Using Ontario County Data



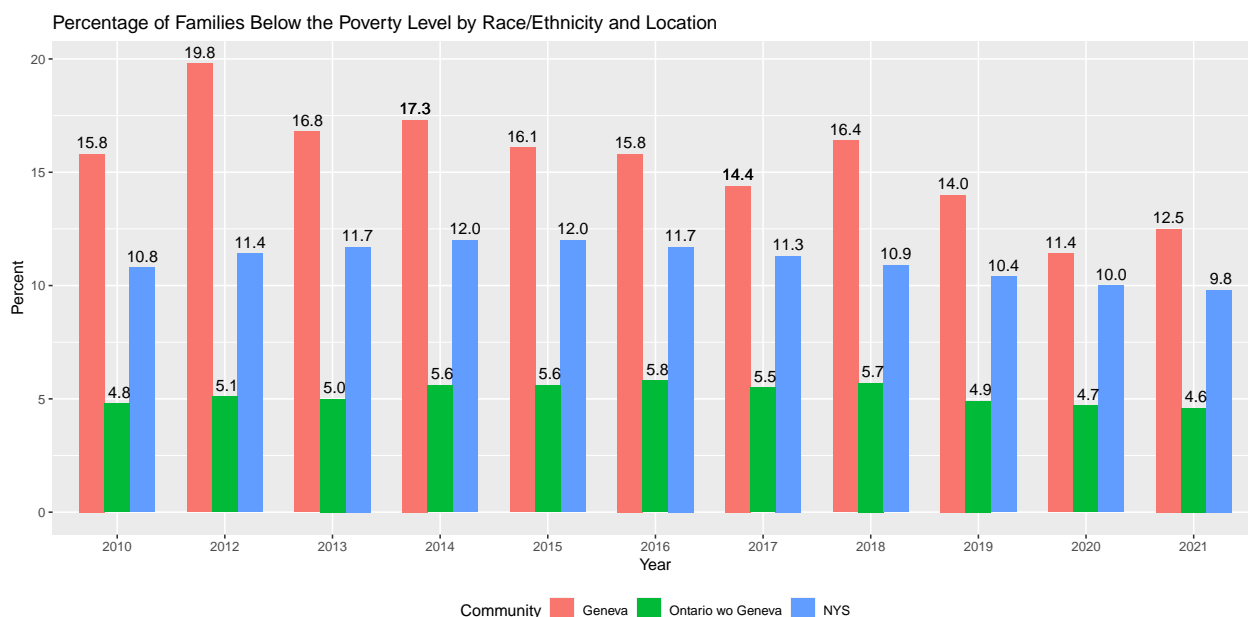
- SNAP (Supplemental Nutrition Assistance Program) is commonly known as Food Stamps. Unlike TANF, a household does not need to have persons under the age of 18 in order to be eligible to receive SNAP benefits.
- The count of SNAP households is shown within each bar.
- The SNAP use rate among Geneva households has typically been more than two-and-a-half times that of the rest of Ontario County.
- Source: SNAP data from Ontario County Department of Social Services, Workforce Development and Youth Bureau Annual Reports.
- Source: Household data are from [ACS Selected Economic Data, 2021](#). Data for earlier years may be obtained at this same link using the drop-down **Data Profiles** menu.

SNAP (Food Stamps) Using U.S. Census Data



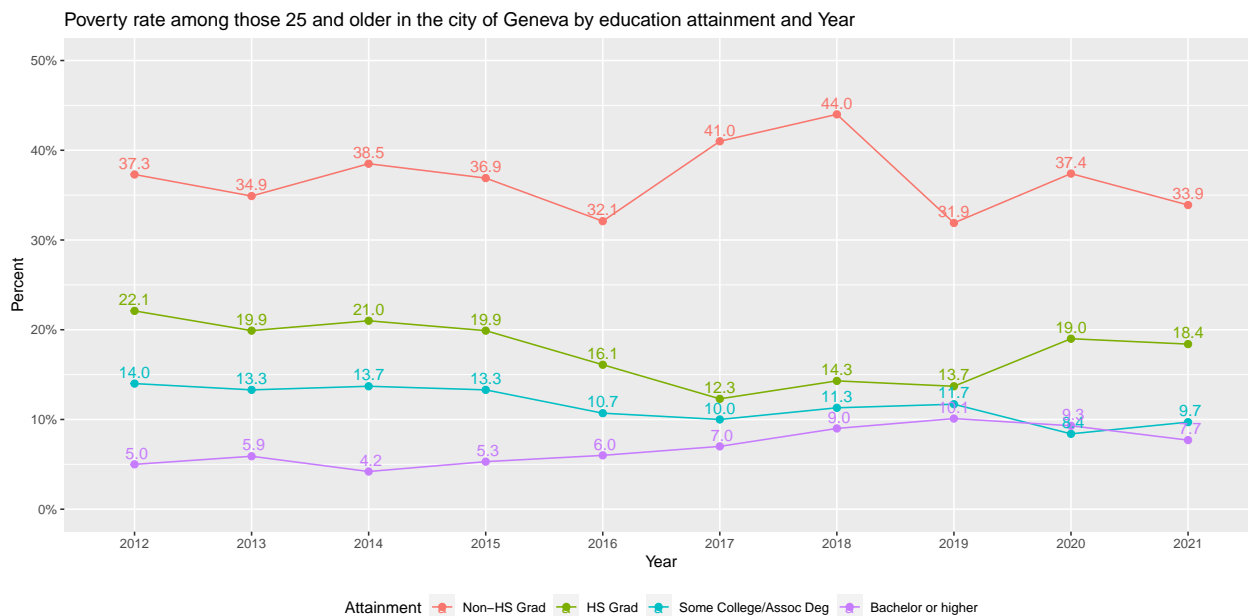
- Source: These Household and SNAP data are U.S. Census data and as such are estimates. The results are similar to, but not identical with the the preceding data supplied by Ontario County. Link: [ACS Selected Economic Data, 2021](#). Note: Data for earlier years may be obtained at this same link using the drop-down **Data Profiles** menu.

Families Below Poverty Level



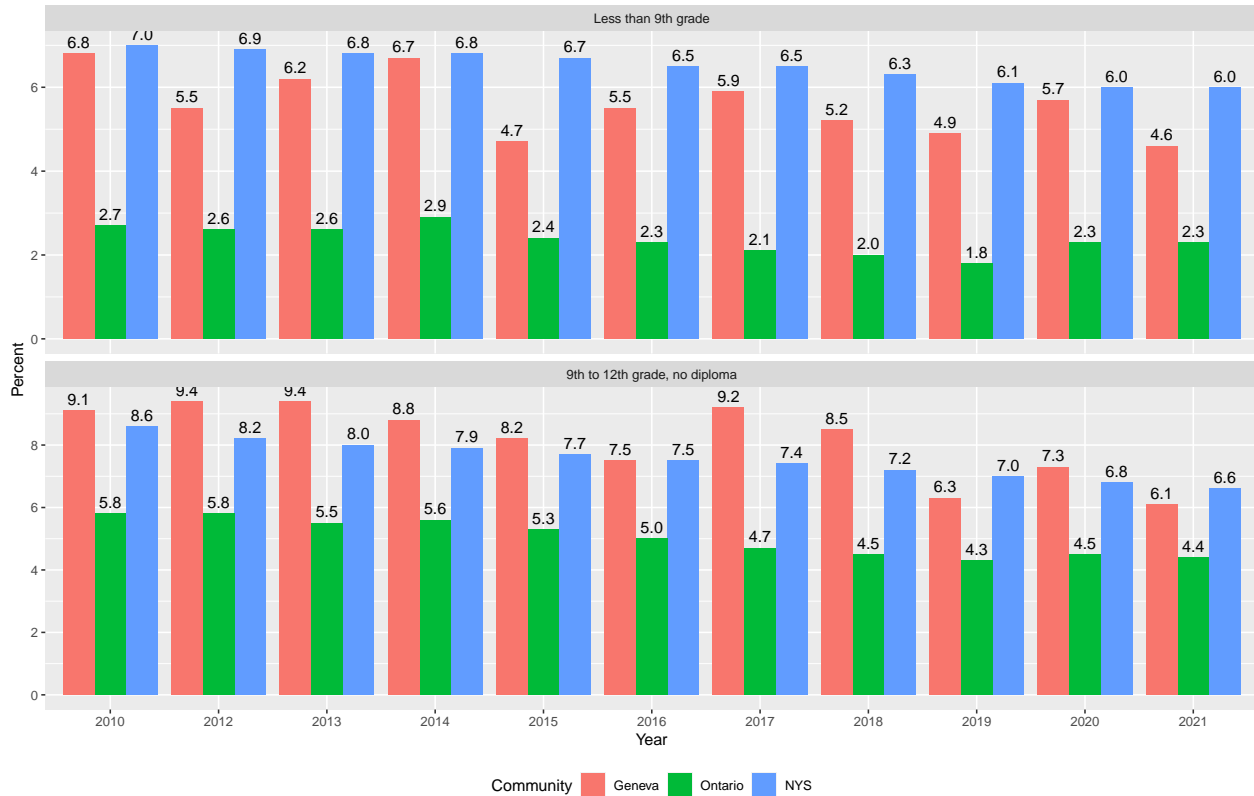
- Source: [ACS Selected Economic Characteristics for Geneva, 2021](#). Note: Data for earlier years may be obtained at these same links using the drop-down **Data Profiles** menu.
- Poverty thresholds vary by family composition and year. In 2021, the threshold for a four-person family with two children was \$26,500. (Source: [ASPE: 2021 Poverty Guidelines](#).)

Education and Poverty Level, City of Geneva



- A high school diploma is so important. The poverty rate is currently more than triple for those who do not graduate from high school.
- Source: [ACS B17003: Poverty Status in the Past 12 Months of Individuals by Sex by Educational Attainment for Geneva, 2021](#). Note: Data for earlier years may be obtained at this same link using the drop-down **Data Profiles** menu.

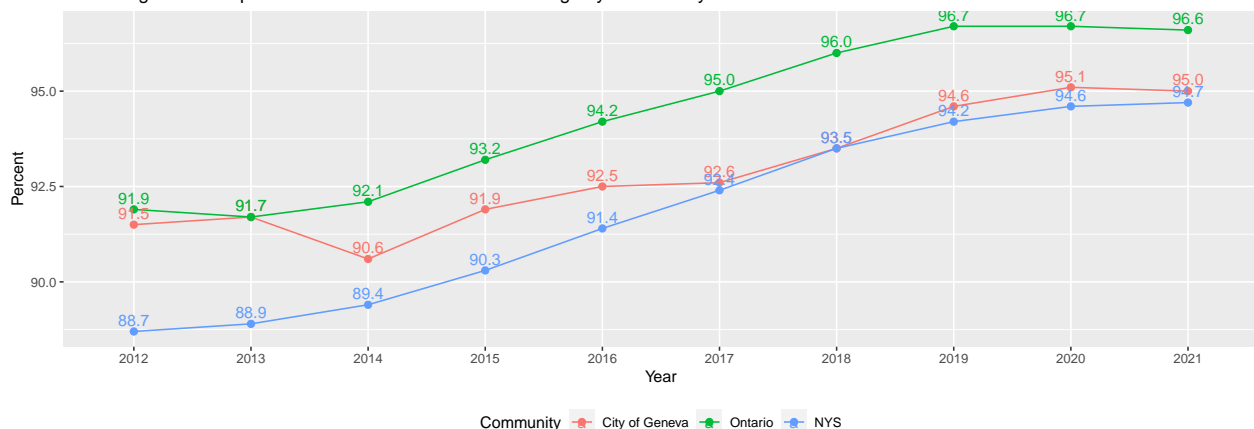
Percentage of residents 25 years of age and older without a high school diploma, by Community and Year



- The percentage of residents 25 years of age and older in Geneva without a high school diploma is higher than in Ontario county.
- Source: [DP02: Selected Social Characteristics in the United States](#). Note: Data for earlier years may be obtained at these same links using the drop-down **Data Profiles** menu.

Health Insurance Coverage

Percentage of the Population with Health Insurance Coverage by Community and Year

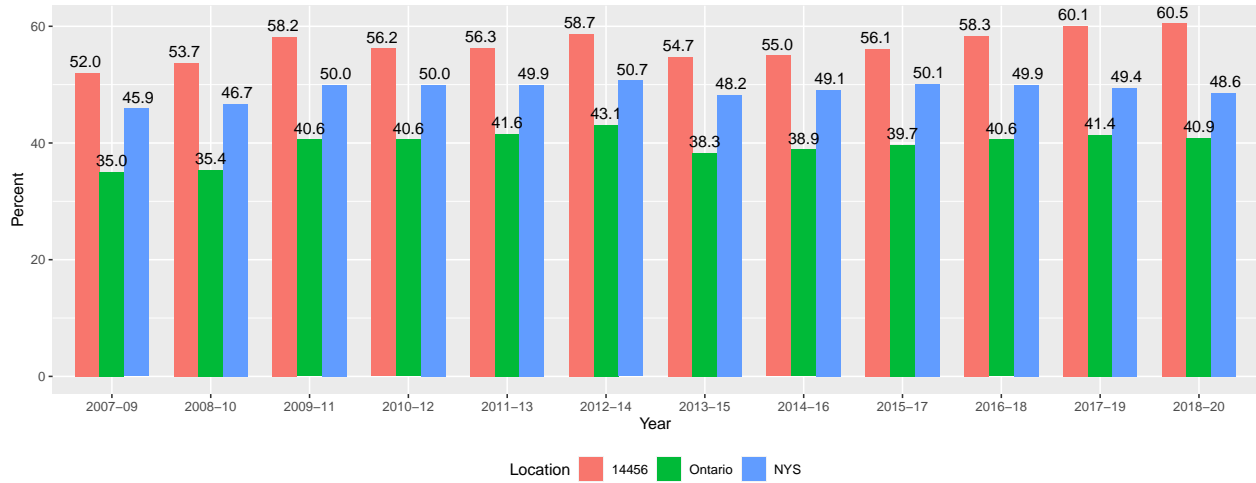


- The vast majority of Genevans have health insurance, though coverage rates are lower in Geneva than in Ontario County.
- Sources: [ACS Selected Economic Characteristics for Geneva, 2021](#). Note: Data for earlier years may be obtained at these same links using the drop-down **Data Profiles** menu.

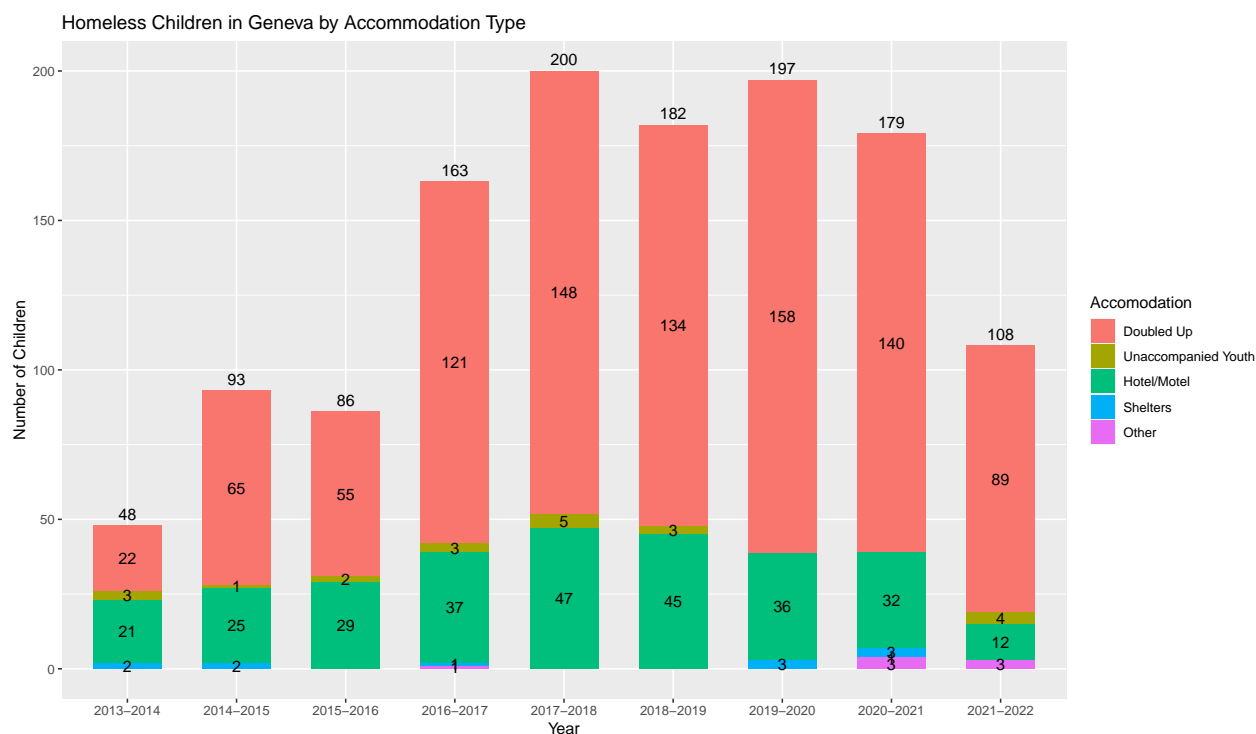
Medicaid or Self-pay Births: Three-year Averages

- **Medicaid births** are births to mothers whose primary financial coverage was Medicaid, Prenatal Care Assistance Program (PCAP), Medicaid Obstetrical and Maternal Services (MOMS), Child Health Plus A, Medicaid Managed Care, or Family Health Plus.
- New York State reports Medicaid birth data as three-year averages by ZIP Code. The 14456 ZIP Code includes both the city and the town of Geneva.
- Sources: [County/ZIP Code Perinatal Data Profile - 2018-2020](#) and [New York State Regional Perinatal Data Profile - 2018-2020](#). Note: Data for earlier years may be obtained by modifying the years in the link.

Percentage of Medicaid or Self-pay Births by 3-Year Period and Location



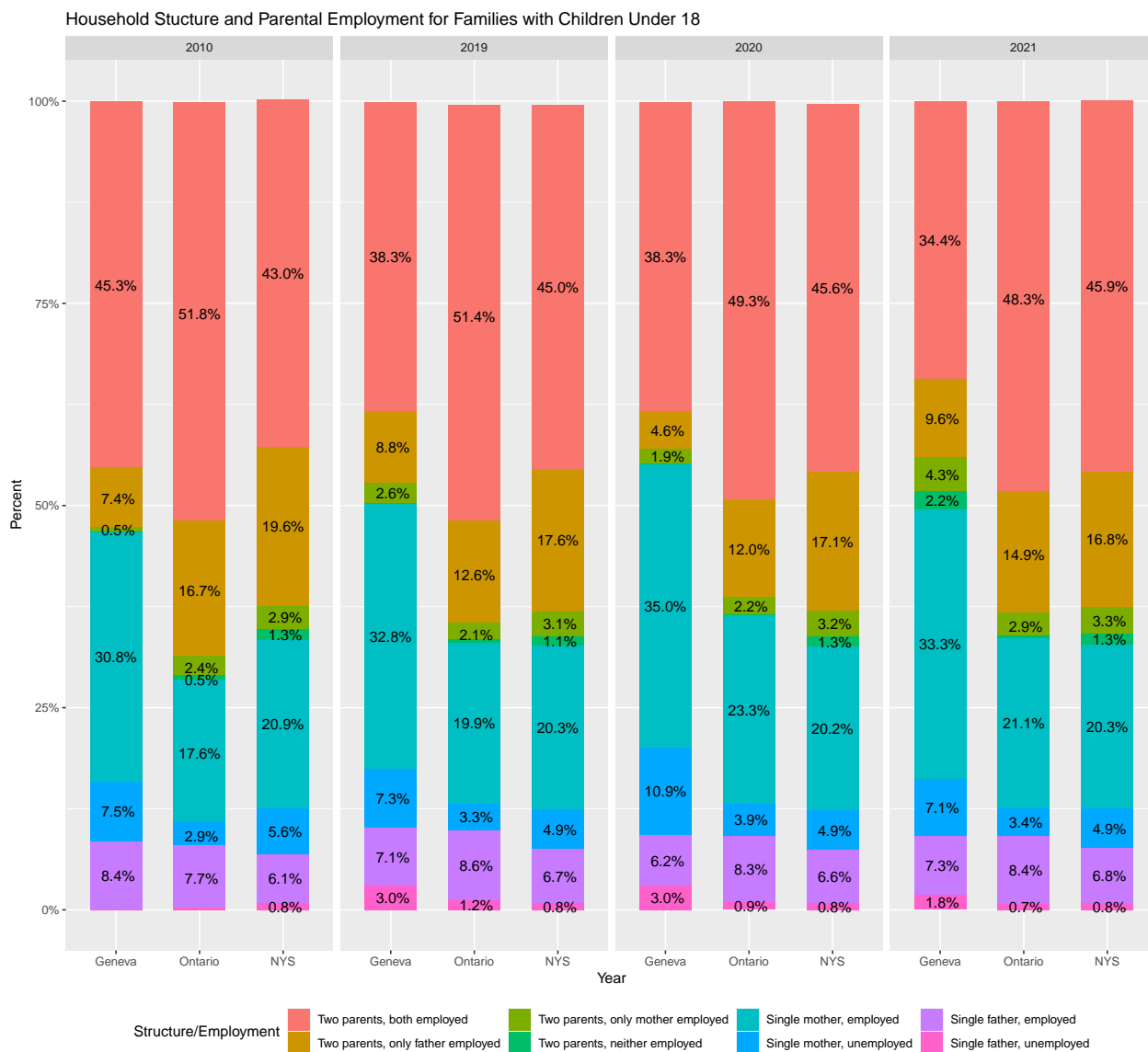
Homeless Children in Geneva by Accommodation Type



- Data are collected by school year. Source for all data: Geneva City School District, Office of Central Registration.
- Accommodation types are based on the McKinney-Vento Homeless Assistance Act of 1987, which “was the first major federal legislative response to homelessness.” See <http://www.nationalhomeless.org/publications/facts/McKinney.pdf>
- Family Promise of Ontario County (FPOC) began in 2018 and is a non profit 501c(3) organization focused on “helping families experiencing homelessness and low-income families achieve sustainable independence through a community-based response.” Visit their website at <https://www.familypromiseontariocounty.org> for more information.
- FPOC began operation in September 2018. During the first 6 months of 2019, seven families (9 adults, 16 children) were served for a total of 1,291 bed nights and 3,870 meals (Geneva portion: 389 bed nights and 1,167 meals) which was made possible by 5,985 volunteer hours.
- The following points are from the Homelessness/Poverty Fact Sheet at <https://familypromise.org/homelessness-fact-sheet/>
 - 2.5 million children will experience homelessness this year in America.
 - 1 in 30 children in the United States experience homelessness annually.
 - Nearly 1.3 million school children were homeless in school year 2014–15. Students experiencing homelessness are up to nine times more likely than their non-homeless peers to repeat a grade.
 - 51% of homeless children are under age 5 and, therefore, too young for school and are not counted.
 - 35% of all homeless persons nationwide are families with children.
- National Alliance to end Homelessness, New York Fact Sheet: <https://endhomelessness.org/wp-content/uploads/2019/08/Ny-fact-sheet-2019.pdf>

Goal 4: Children have safe, stable, and nurturing environments in their homes, community, and schools

Household Structure / Parental Employment

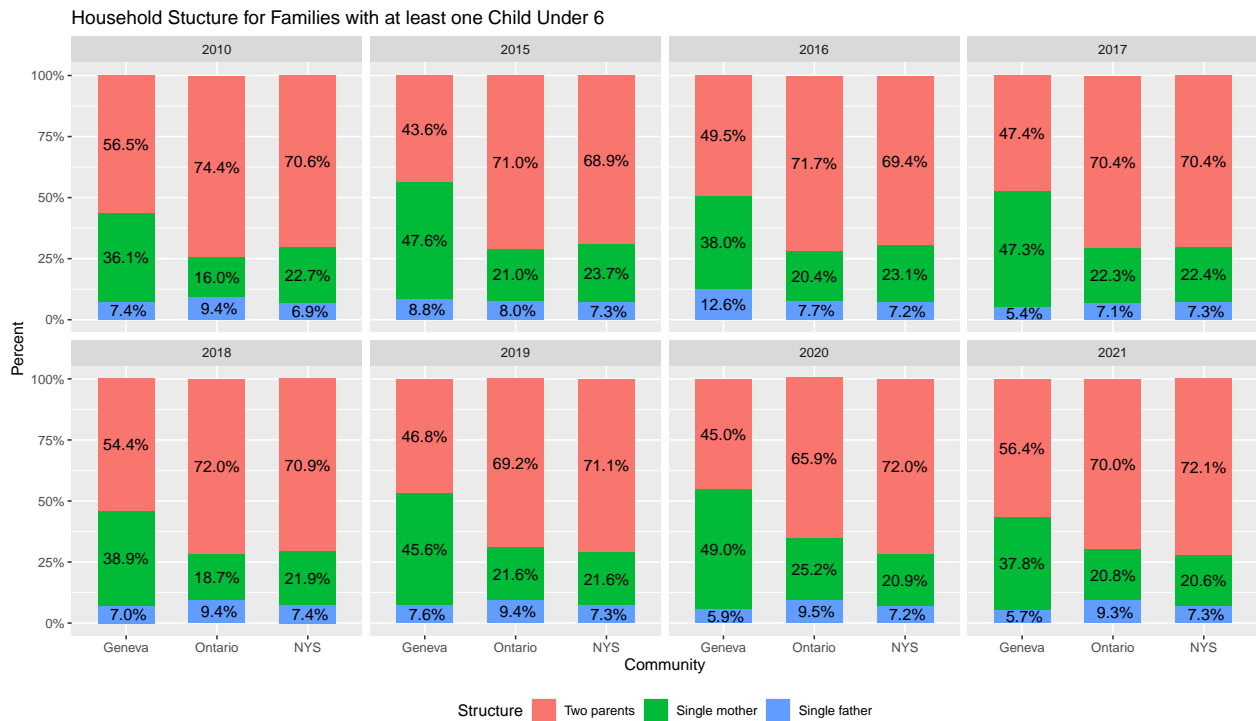


- Note: Categories of less than 0.5% are shown but not labeled in this bar plot.
- In each of the last three years, only half the of families with children under 18 in Geneva have both parents present compared to two-thirds in Ontario County as a whole.
- Source: [ACS Employment Characteristics of Families, 2021](#). Note: Data for earlier years may be obtained at this same link using the drop-down **Data Profiles** menu.

Household Structure for Families with Children Under 6



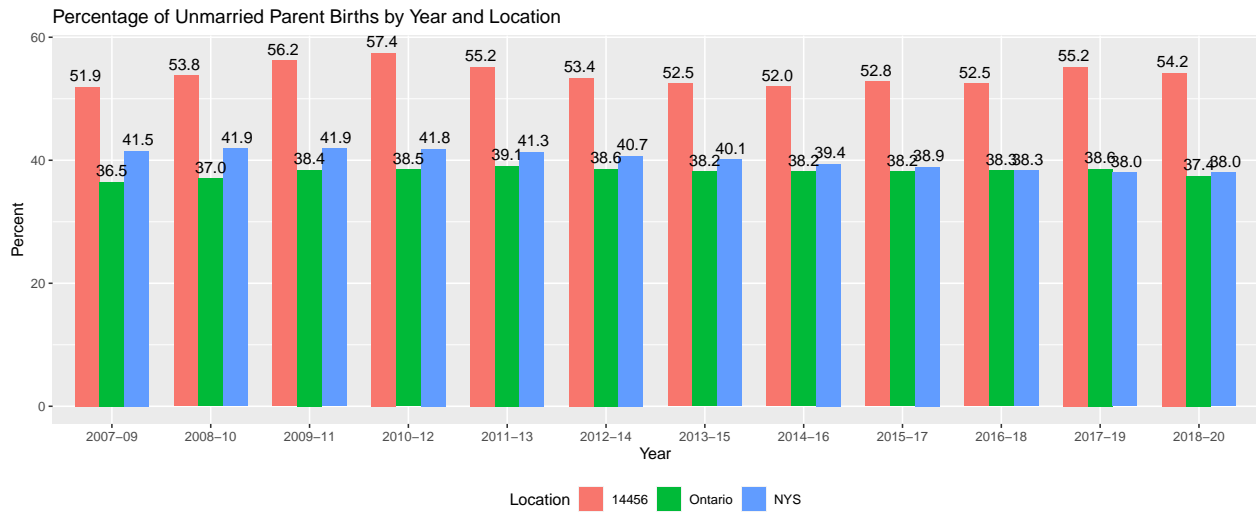
- In those Geneva families in which all children are under 6, both parents are present less than 60% of the time. This compares to roughly 70% in Ontario County and New York State.
- Source: [ACS S2302: Employment Characteristics of Families, 2021](#). Note: Data for earlier years may be obtained at this same link using the drop-down Data Profiles menu.



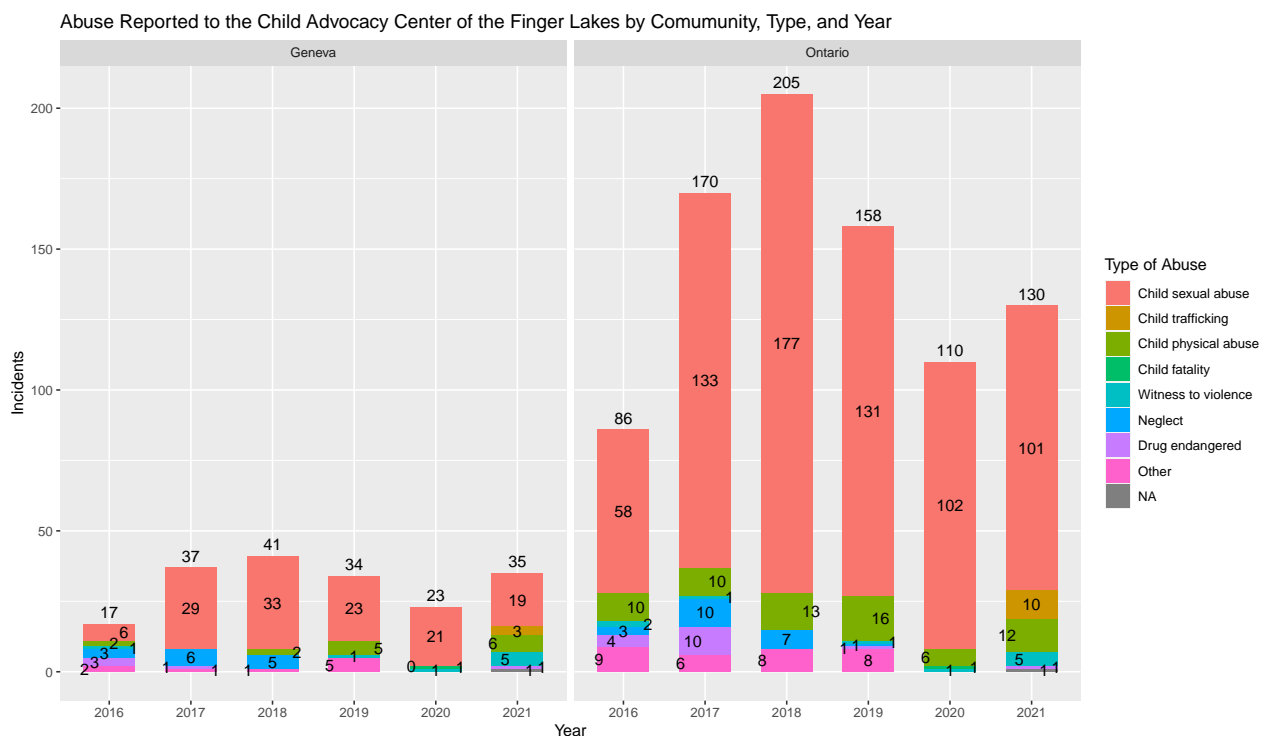
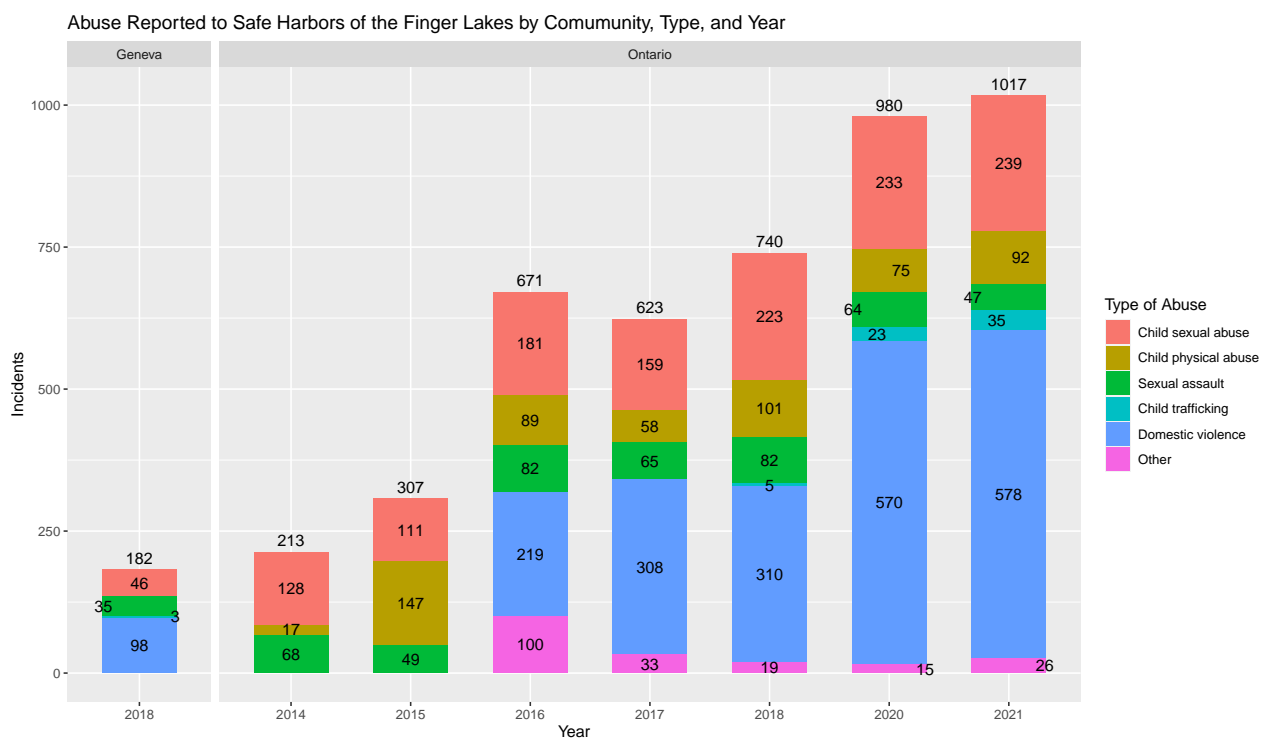
- Source: [ACS S1101: Households and Families, 2021](#). Note: Data for earlier years may be obtained at this same link using the drop-down Data Profiles menu.

Unmarried Parent Births: Three-year Averages

- New York State Public Health Law (4135) prohibits the specific statement on the birth certificate as to whether the child was born in or out of wedlock. Unmarried Parent live births are defined as those births for which the birthing parent has either filed an acknowledgement of parenthood or supplied no spousal information.
- New York State reports Unmarried Parent birth data as three-year averages by ZIP Code. The 14456 ZIP Code includes both the city and the town of Geneva.
- Source: [County/ZIP Code Perinatal Data Profile - 2018-2020](#) and [New York State Regional Perinatal Data Profile - 2018-2020](#). Note: Data for earlier years may be obtained by modifying the years in the link.

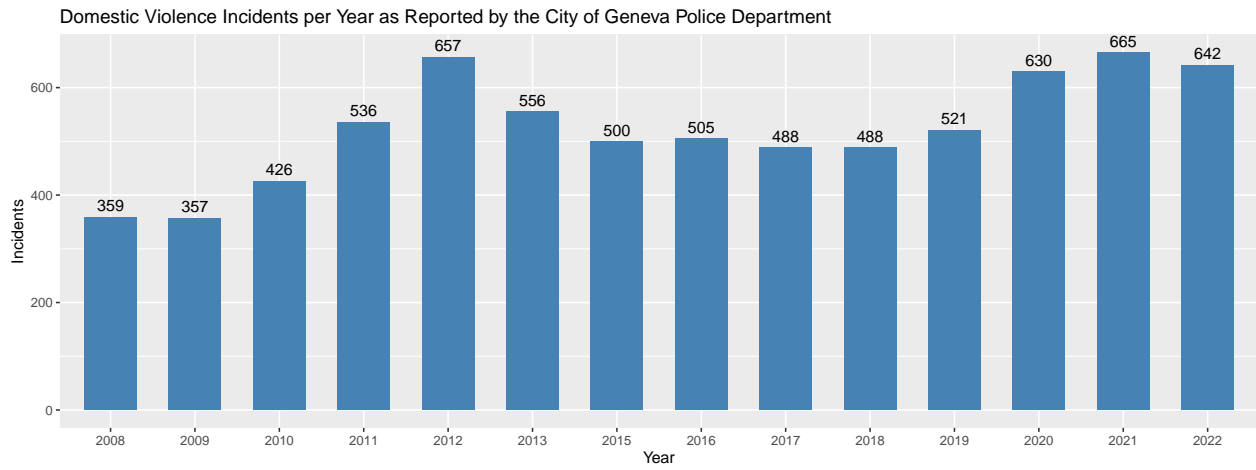


Reports of Abuse



- Categories with just one incident are shown but not labeled within the corresponding bar.
- These data are not necessarily representative of the entirety of reported abuse in Geneva or Ontario County as there are other local agencies that individuals can call to report abuse.
- Source: Safe Harbors of the Finger Lakes and the Child Advocacy Center of the Finger Lakes.

Domestic Violence Incidents

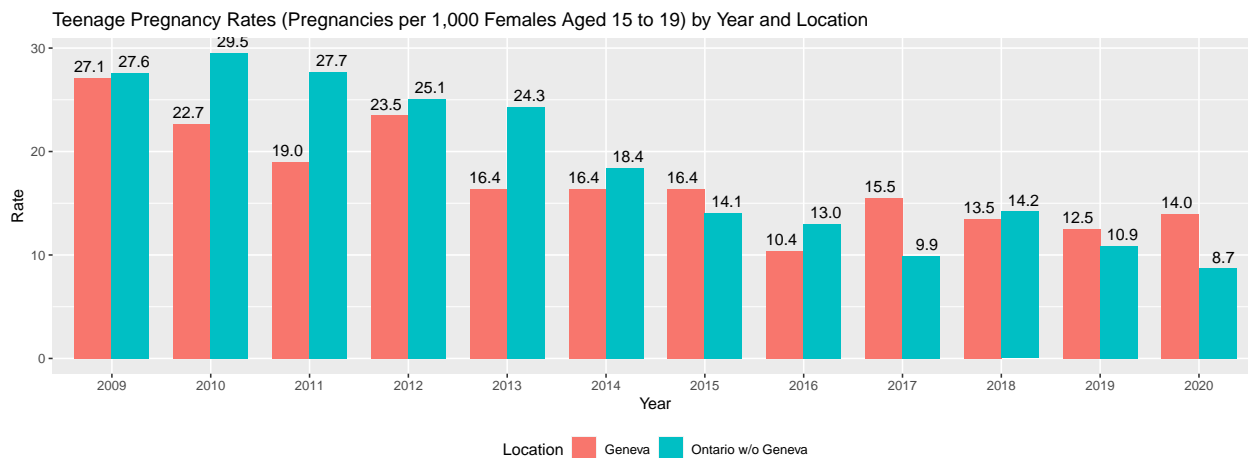


- Source for 2013–2021 Data: [Geneva Police Department Annual Reports](#).
- Source for 2008–2012 Data: Geneva Police Department as reported in [Success for Geneva's Children 2014 Data Report](#).
- Data for 2014 is not available.

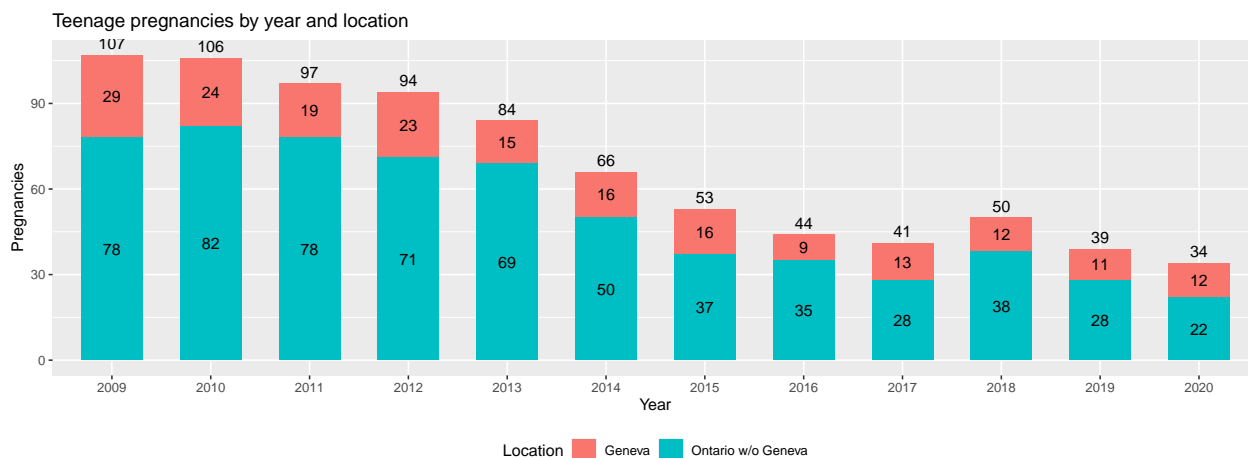
Goal 5: Families and caregivers possess and practice child-rearing skills that promote optimal child development

Teen Pregnancies

Note: **Teenage** is defined as ages 15 to 19. The **teen pregnancy rate** is defined as the number of teenage pregnancies per 1,000 females aged 15 to 19 in the population.

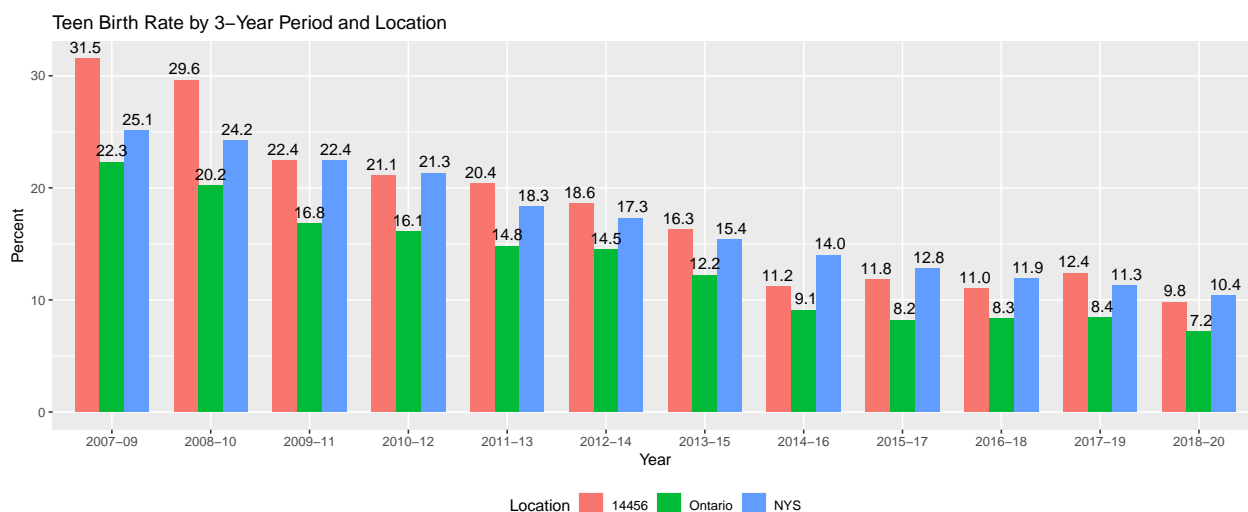


- The graph indicates that teen pregnancy rate (the number of pregnancies per 1,000 female teens) in Geneva has generally been lower than or roughly equal to the rate for the rest of Ontario County.
- Most significant in both Geneva and the county is the substantial drop in the teen pregnancy rate. It has dropped by more than 50% over the last decade.
- Nonetheless, because the population of Geneva is significantly younger than the rest of Ontario county (13.1% of females in Geneva are age 15 to 19, while only 5.1% are in the rest of the county), Geneva has a disproportionate number of the county’s teen pregnancies. See the graph below.
- Thus, despite the lower teen pregnancy rate, Geneva still requires services for these young mothers.
- Sources: [Table 30: Total Pregnancies and Teenage Pregnancies by Type and Resident County New York State, 2020](#) and [Table 53: City and Village Profiles Selected Statistics for Cities and Villages Over 10,000 Population New York State, 2020](#). For population data: [United States Census Bureau, 2020](#).



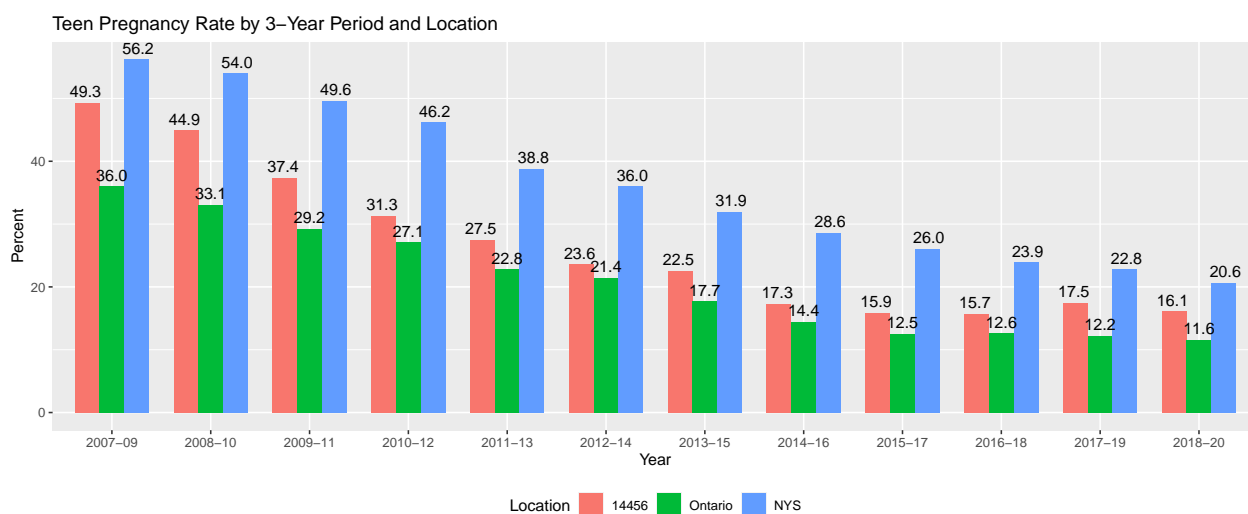
Teen Birth Rate: Three-year Averages

- New York State also reports Teen Birth Rate data as three-year averages by ZIP Code. The 14456 ZIP Code includes both the city and the town of Geneva.
- Teen births are births to females ages 15–19. The **teen birth rate** is the number of teen births per 1,000 female population ages 15–19. The rates below are computed using the 3-year average number of teen births and the population for the middle year of the three-year time period.



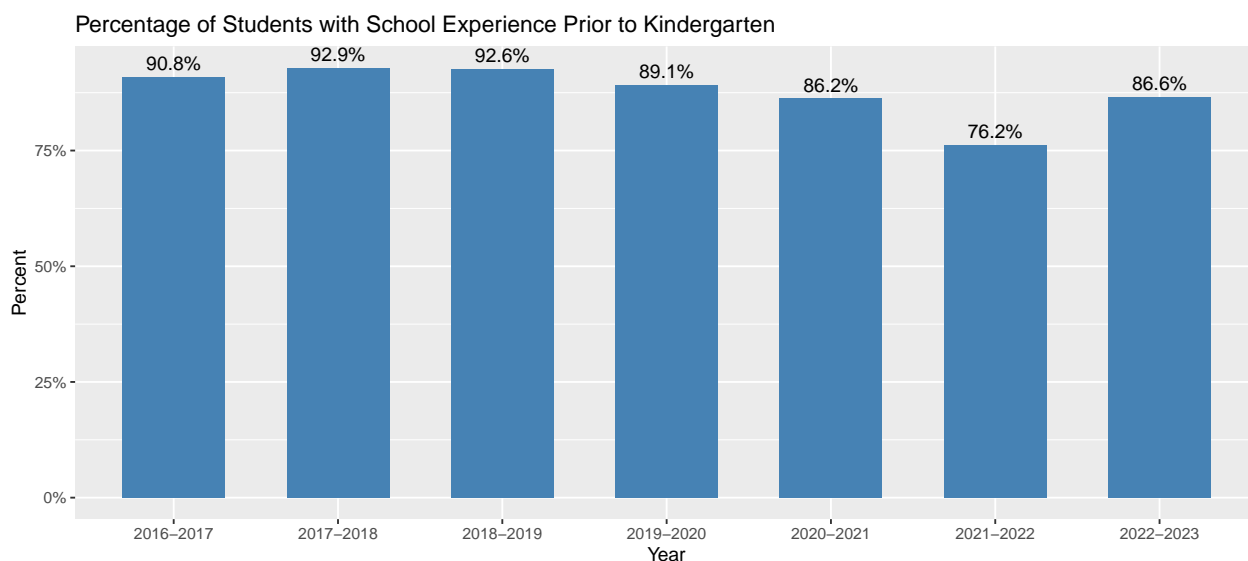
Teen Pregnancy Rate: Three-year averages

- New York State reports Teen Pregnancy Rate data as three-year averages by ZIP Code. The 14456 ZIP Code includes both the city and the town of Geneva.
- Teen pregnancies are births + abortions + spontaneous fetal deaths to females ages 15–19. The **teen pregnancy rate** is the number of teen pregnancies per 1,000 female population ages 15–19. The rates below are computed using the 3-year average number of teen births and the population for the middle year of the three-year time period.



Sources for the data on this page: [County/ZIP Code Perinatal Data Profile - 2018-2020](#) and [New York State Regional Perinatal Data Profile - 2018-2020](#). Note: Data for earlier years may be obtained by modifying the years in the link.

School Experience Prior to Kindergarten



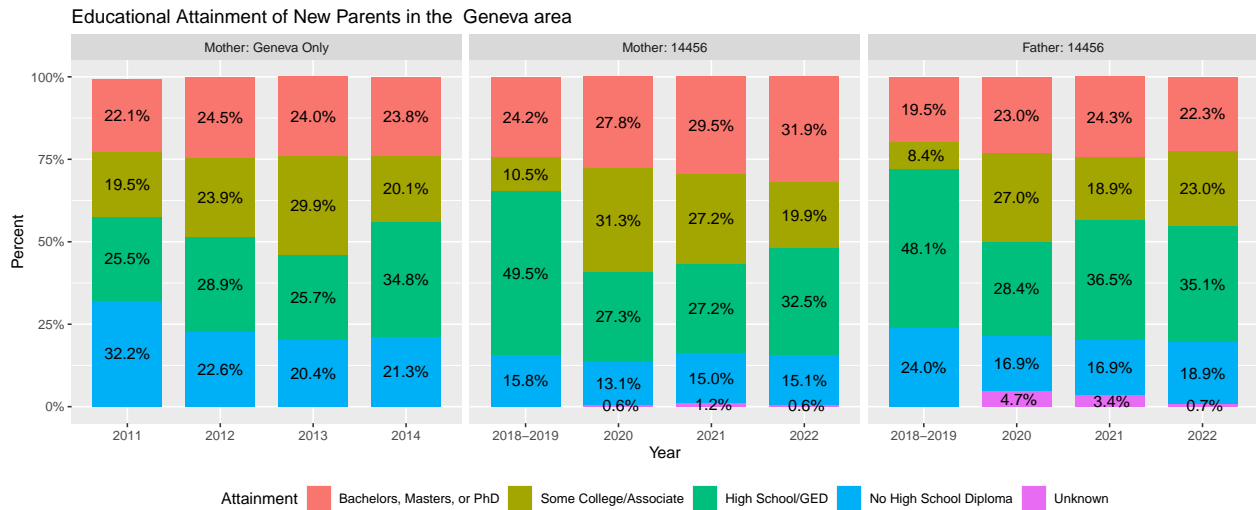
- The data represent the percentage of students enrolled in kindergarten in the Geneva Public School District with school experience prior to kindergarten.
- The dramatic effect of COVID-19 pandemic during 2021 on pre-K school experience can be seen in the 2021–2022 kindergarten enrollment data.
- Data Source: Registrar’s Office, Geneva City School District.

Additional notes from the United States Census Bureau on Pre-School Enrollment.

- The percentage of children ages 3 and 4 enrolled in school fell from 54% in 2019 to 40% in 2020, the first time since 1996 that fewer than half of the children in this age group were enrolled.
- Enrollment in nursery schools fell by 25% (from 4.7 million to 3.5 million), and in kindergarten by 9% (4.1 million to 3.7 million).
- The number of 3–4-year-old children of working mothers enrolled in nursery school declined by 35% from 2019 to 2020, compared with a 10% decrease of other enrolled 3-4 year-olds (the overall decrease was 26%).

Source: [Census Bureau Data Reveal Decline in School Enrollment](#).

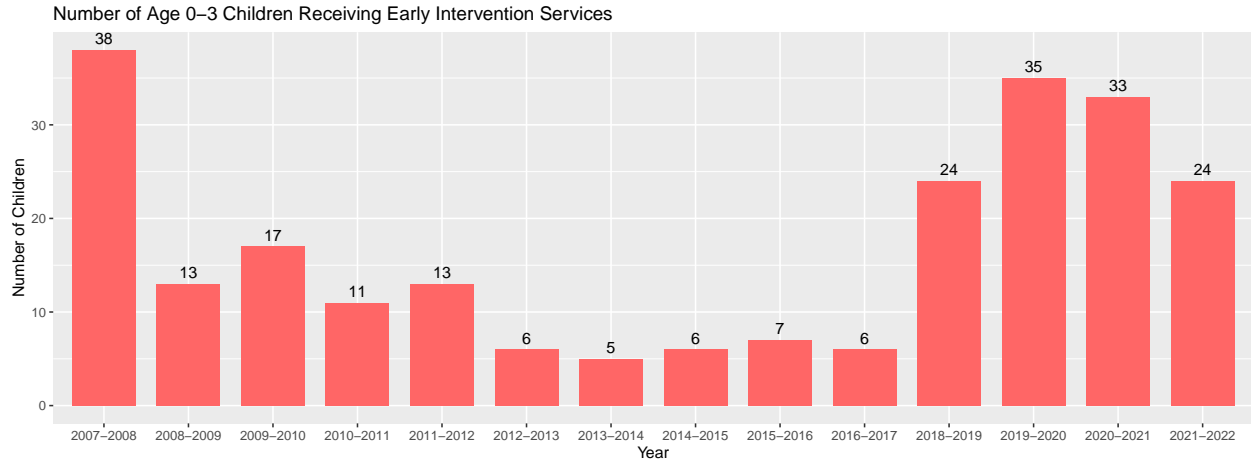
Educational Attainment of New Parents in Geneva



- **⚠** For 2022: The data are preliminary.
- For 2011–2014:
 - The data are for Geneva and mothers of new children only.
 - Source: [Success for Geneva’s Children 2016 Data Report](#).
- For 2018–2019: the data represent the educational attainment of parents of children born to 190 new mothers and 154 new fathers living in the 14456 ZIP Code during the period 9 May 2018 to 23 May 2019.
- Source: Ontario County Department of Health and Human Services (NYS Electronic Birth Certificate Registry).
- The 14456 ZIP Code encompasses more than the City of Geneva.

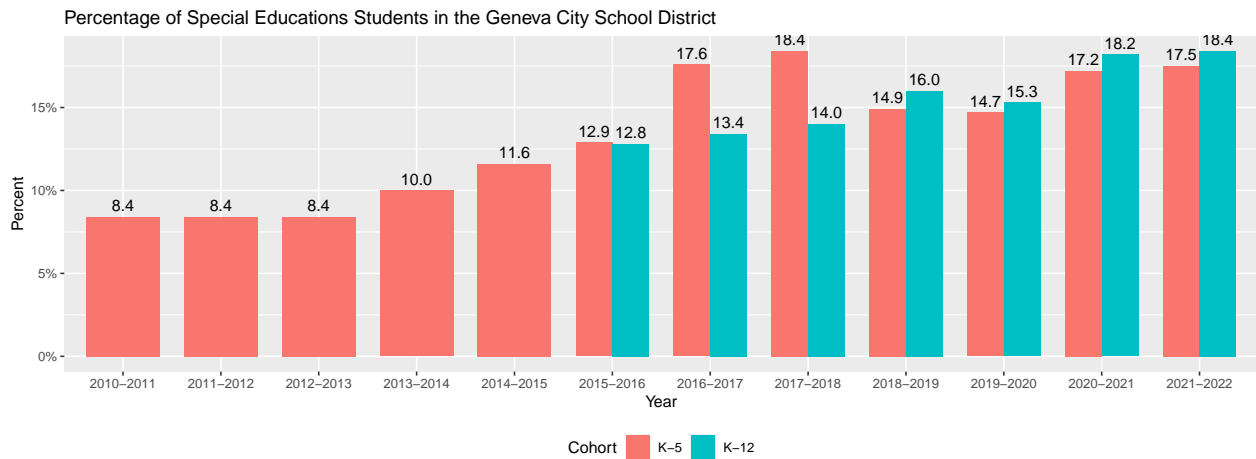
Goal 6: Children with special needs receive timely and appropriate services

Early Intervention for Preschoolers in Geneva



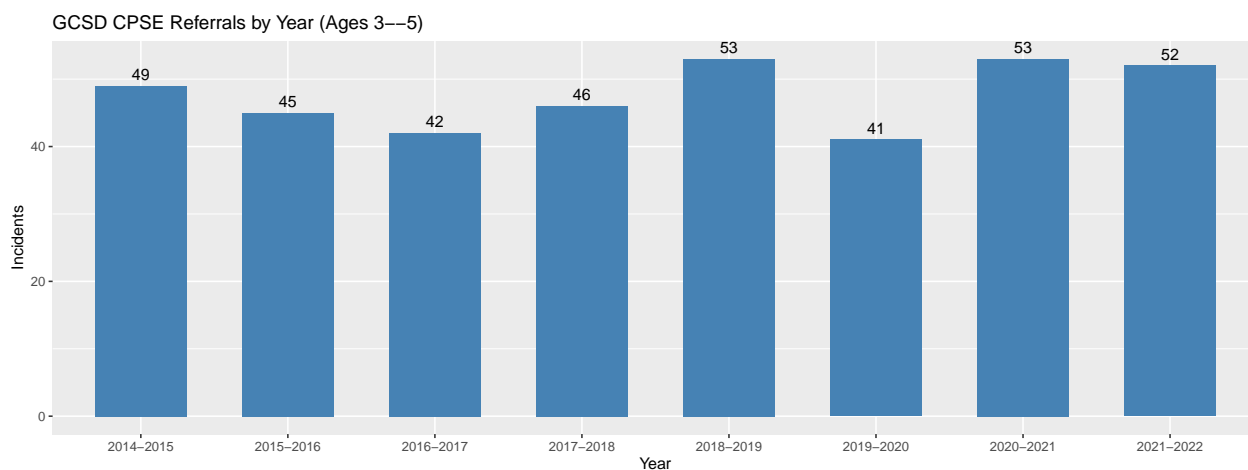
- Source of data for 2018–2022: Ontario County Department of Public Health.
- Source of data through 2011–2012: [Success for Geneva’s Children 2016 Data Report](#).
- The remaining data come from [Success for Geneva’s Children Data Books](#).

Special Education Services for Geneva Students



- Source for data through 2014–2015 [Success for Geneva’s Children 2016 Data Report](#).
- Source for later data: Geneva City School District, Office of Student Services.

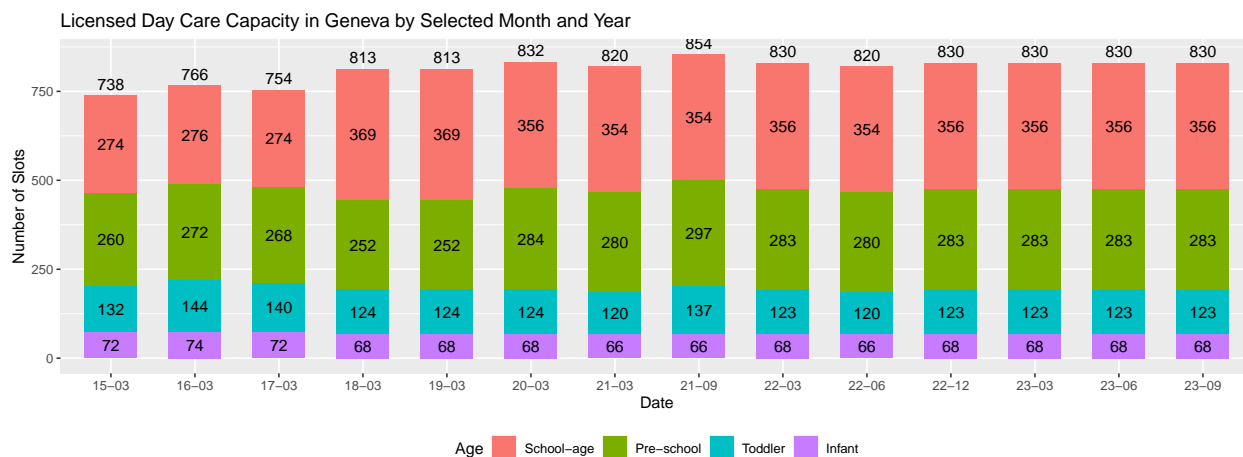
Committee for Preschool Special Education Referrals



- The Committee for Preschool Special Education (CPSE) is a committee of the Geneva City School District specifically assigned with making sure that children ages 3 to 5 are referred for an evaluation if it is suspected that the child has a disability. It may be a physical disability, speech and language issue, learning issue, autism, etc. Once evaluated if the child qualifies for services, Ontario County pays for whatever program or therapy is required (ages 3-5) but the school district is responsible for making sure the children receive the services.
- The Committee on Preschool Special Education:
 - Accepts referrals made by parents, physicians, preschool programs and other sources and forwards the referrals to an Evaluation Team.
 - Receives the recommendation of the Evaluation Team and approves the provision of appropriate services, such as speech therapy or physical therapy, when needed.
 - Reviews each child's progress on a regular basis. The Committee on Preschool Special Education at the School District works in conjunction with the Ontario County Public Health Office of Children with Special Needs in the provision of these services.
- Source: Geneva City School District, Office of Student Services.

Goal 7: Children have the opportunity to attend quality early childhood and care programs

Licensed Child Care Capacity in Geneva: Overview



- Recent data are shown quarterly (e.g., March, 2023 is labeled 23-03). The number of available child care slots has not changed significantly since 2018.
- The total for each category appears at the top of the bar.
- The total number of child care slots at Family Care and Group Family Care sites is contingent upon the ages of the children. The data above are the total of the absolute maximums possible for each age category at each such site. However, not all site maximums can occur at once for any Family Care and Group Family Care facility.
- New York State classifies the age ranges for Infants and Toddlers differently depending on the type of day care facility.

| Age | Day Care Center | Family & Group Family Care | School Age Care Center |
|------------|------------------------|----------------------------|------------------------|
| Infant | 6 weeks thru 17 months | 6 weeks thru 23 months | NA |
| Toddler | 18 thru 35 months | 24 thru 35 months | NA |
| Pre-school | 3 years thru 4 years | 3 years thru 4 years | NA |
| School Age | 5 years + | 5 years + | 5 years + |

- Source: Child & Family Resources, Inc.

Licensed Child Care Capacity in Geneva: A Closer look

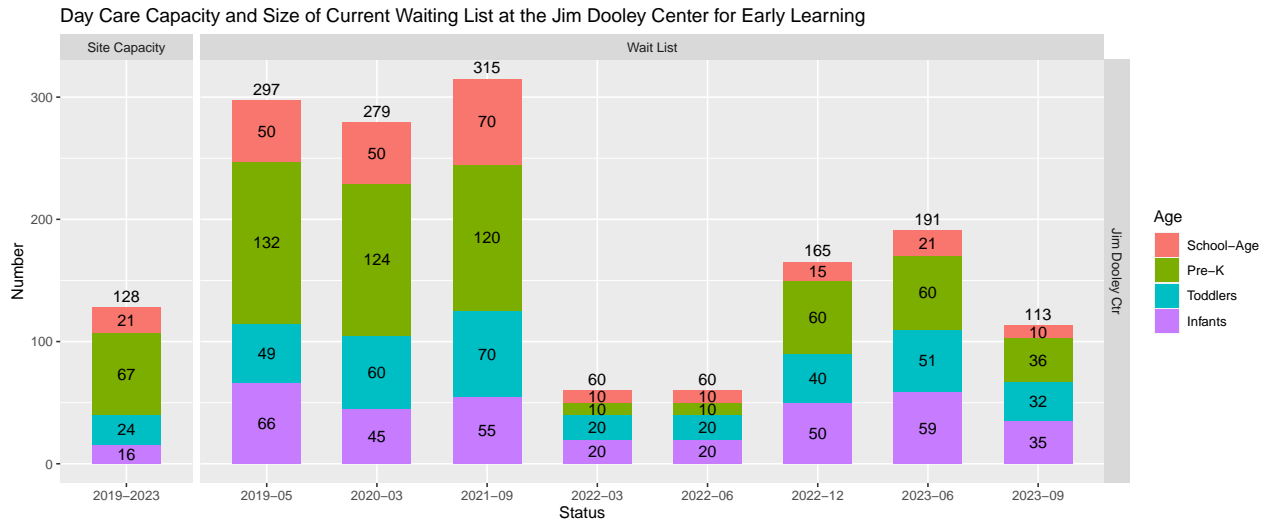


- The total for each category appears at the top of the bar.
- The total number of child care slots at Family Care and Group Family Care sites is contingent upon the ages of the children. The data above are the total of the absolute maximums possible for each age category at each such site. However, not all site maximums can occur at once for any Family Care and Group Family Care facility.
- New York State classifies the age ranges for Infants and Toddlers differently depending on the type of day care facility.

| Age | Day Care Center | Family & Group Family Care | School Age Care Center |
|------------|------------------------|----------------------------|------------------------|
| Infant | 6 weeks thru 17 months | 6 weeks thru 23 months | NA |
| Toddler | 18 thru 35 months | 24 thru 35 months | NA |
| Pre-school | 3 years thru 4 years | 3 years thru 4 years | NA |
| School Age | 5 years + | 5 years + | 5 years + |

- Source: Child & Family Resources, Inc.

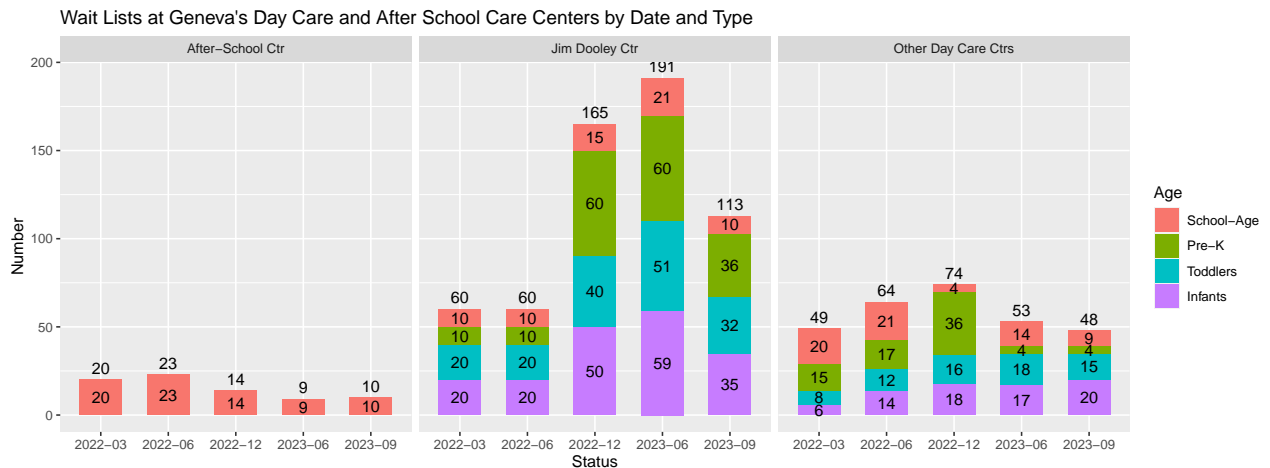
Snapshot: One Center's Recent History



- These data provide a snapshot in time (May 2019, March 2020, etc.) of the capacity and waiting list at the Jim Dooley Center for Early Learning. There is a need for additional child care slots for all age groups.
- Source: Jim Dooley Center for Early Learning and Child & Family Resources, Inc.

Wait Lists for Child Care Centers: Recent History

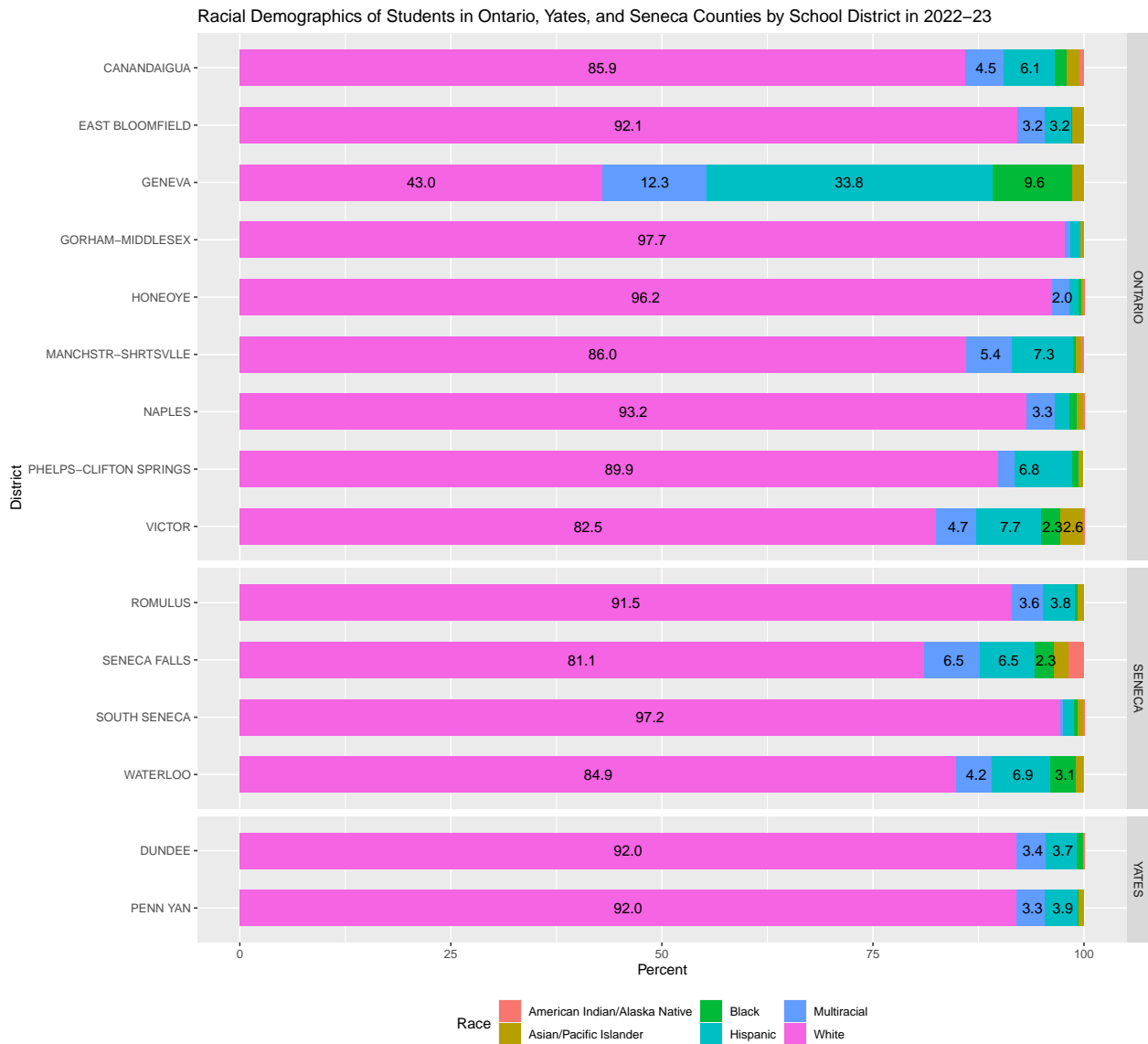
Most children in Geneva are cared for in day care or after-school care centers. The wait lists for these centers are shown below. (These data exclude the wait lists for the smaller family care and group family care facilities.)



- Source for data: Child & Family Resources, Inc.

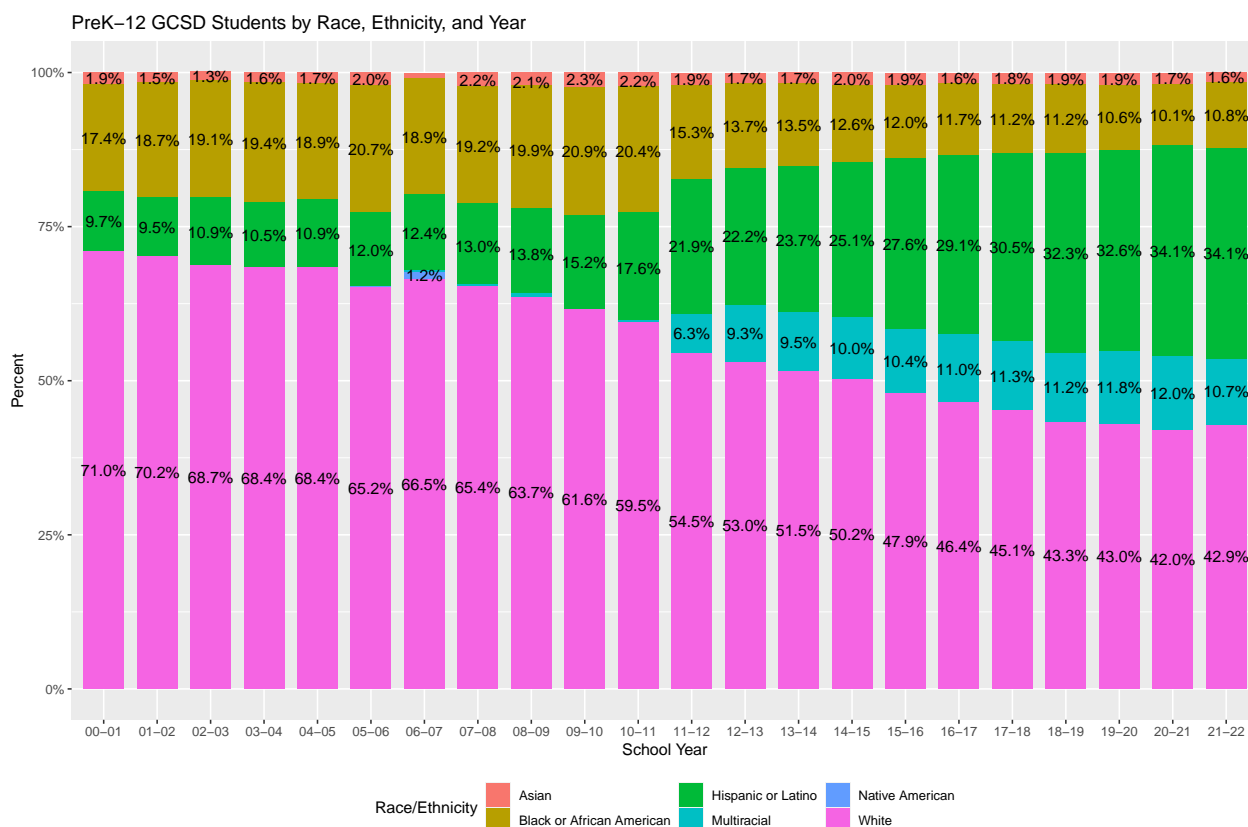
Goal 8: Children attend quality schools and succeed

Student Diversity by School District: 2022-2023



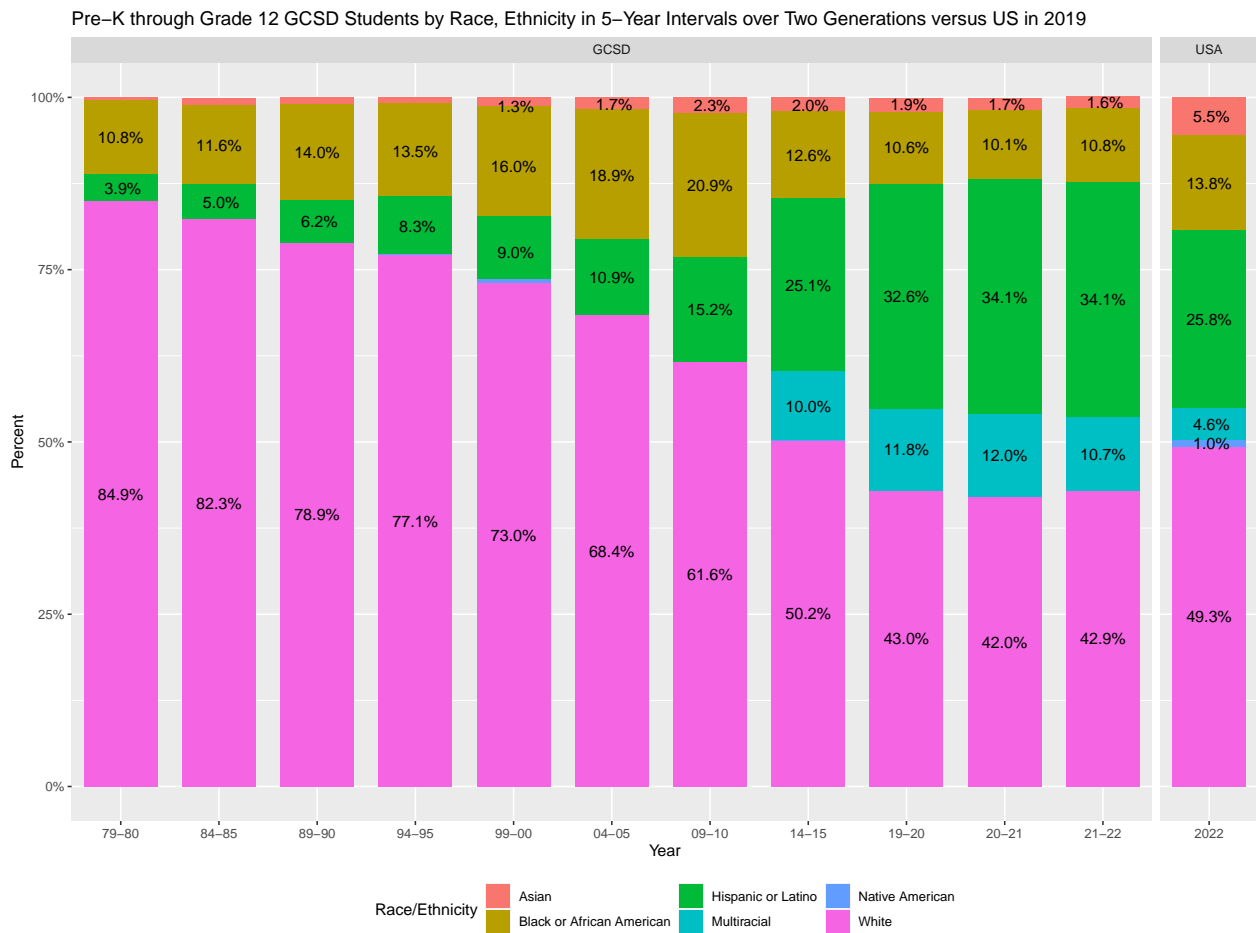
- Categories with less than 2% are shown but not labeled.
- The diversity of Geneva’s schools helps prepare our children for the world that awaits them.
- Source: [NYSED: Information and Reporting Services - Public School Enrollment](#). Posted 2023-02-08. Enrollment as of October 5, 2022 (BEDS day).

Students by Race and Ethnicity: Shift in a Generation



- Groups with less than 1% in a given year are displayed in the graph, but not labeled.
- Note the dramatic change in twenty years.
- The *Finger Lakes Times* (9/27/2018, page 7A) reported that the Geneva school district "is ranked in the top three of the most diverse school districts in the state with more than half of the city's students classified as minorities. In particular, the district has had a 5 percent increase in Hispanic students, including a number of displaced students from Puerto Rico, which was hit hard by two hurricanes in 2017.
- Perhaps using different criteria, newyorkupstate.com reports that Niche.com rated the Geneva City School District as the sixth most diverse school district in Upstate New York for 2019. (See <https://expo.newyorkupstate.com/news/erry-2018/10/a46b0823d39496/diverse-school-district-upstat.html>) The Niche rating uses the U.S. Department of Education's Student Racial Diversity Index, Economically Disadvantaged Percent, and Gender Diversity Index, as well as Parent/Student survey data to rate schools. (See <https://www.niche.com/about/methodology/most-diverse-school-districts/>)
- Source: [NYSED Information and Reporting Services: Public School Enrollment](#).
- Data reported annually on Basic Educational Data System (BEDS) day each October. Data for the intervening years are available.

Changing Student Demographics in Two Generations

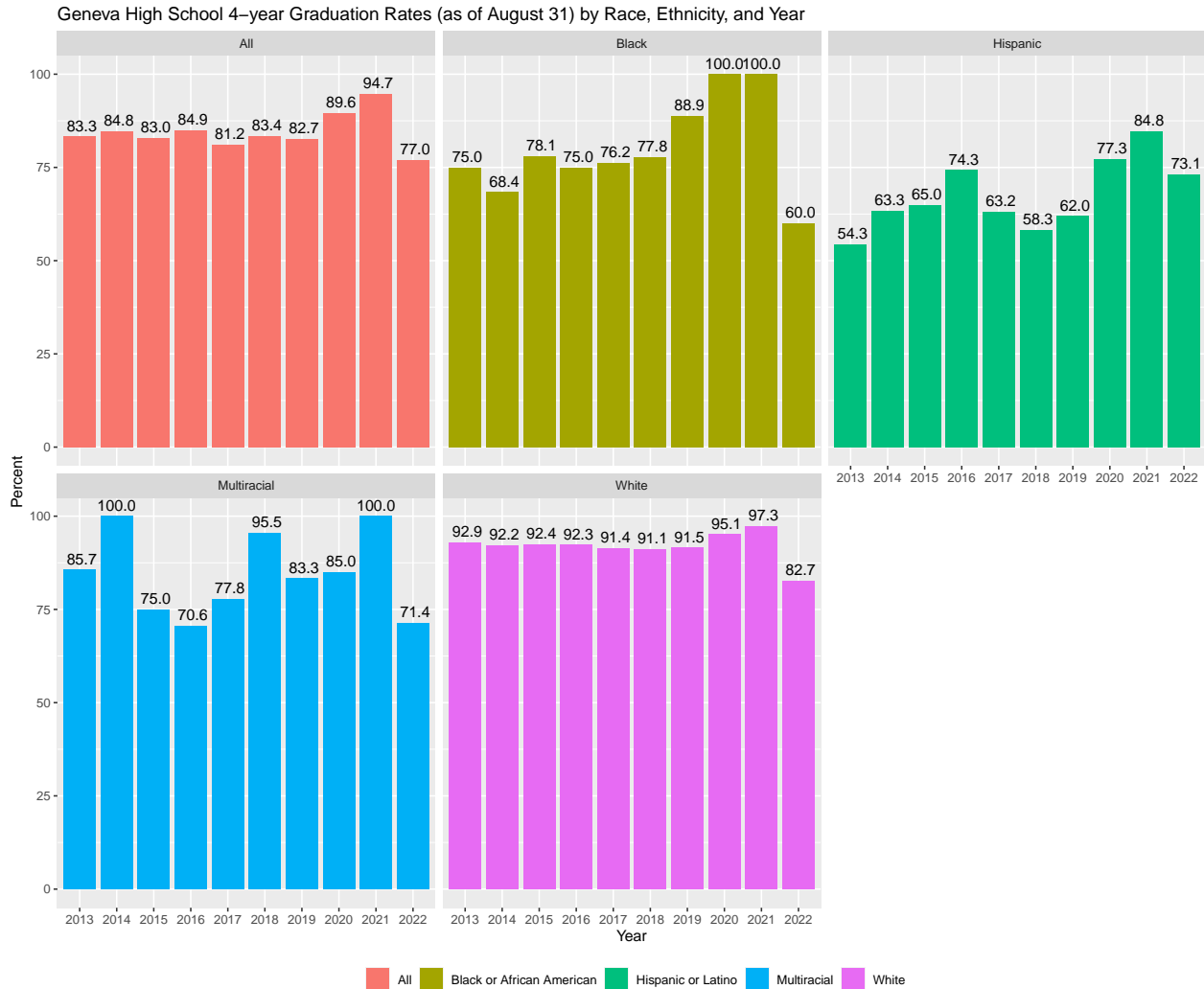


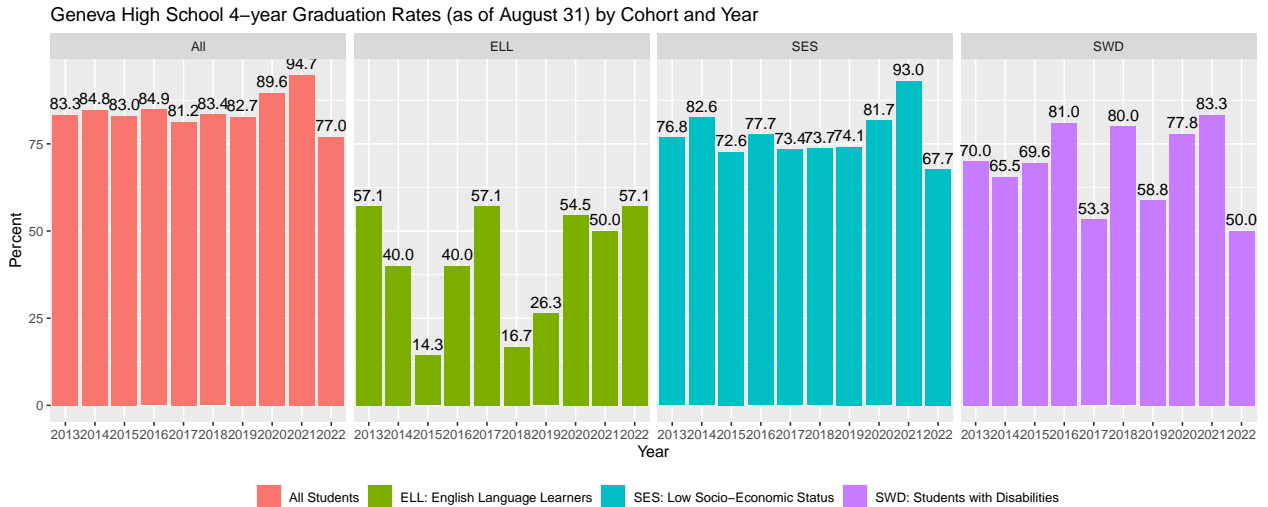
- In two generations, the school population has gone from 85% white to 57% students of color.
- The student population in the Geneva City Public Schools is now more diverse than the population of school-age children (5-17) in the entire United States (compare the final few bars in the graph above). This has been true since the 2019-2020 school year.
- Source: [NYSED Information and Reporting Services: Public School Enrollment](#) and [The Annie E. Casey Foundation KIDS COUNT Data Center](#).

Geneva High School Graduation Rates

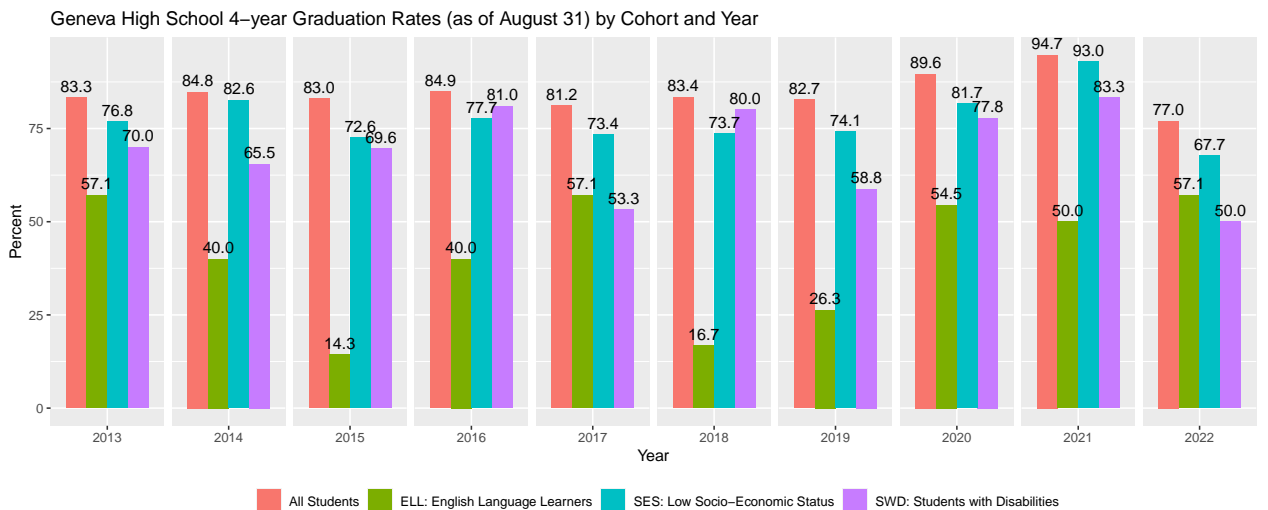
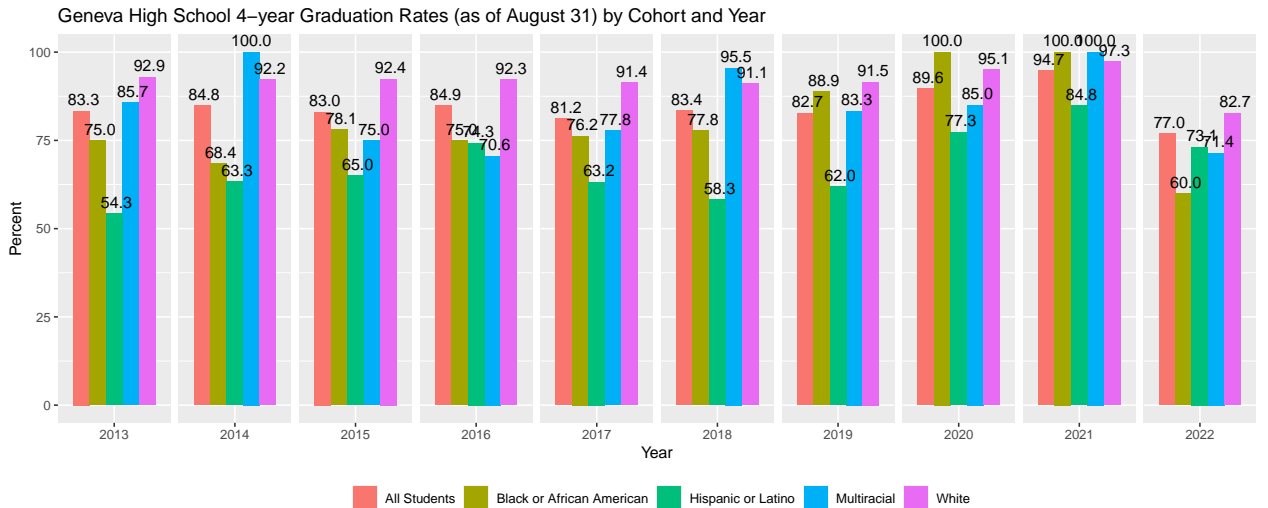
Table 4: Geneva High School 4-year Graduation Rates (as of August 31) by Cohort, and Year

| Year | All | Multiracial | Black | White | Hispanic | SWD | ELL | SES |
|------|------|-------------|-------|-------|----------|------|------|------|
| 2022 | 77.0 | 71.4 | 60.0 | 82.7 | 73.1 | 50.0 | 57.1 | 67.7 |
| 2021 | 94.7 | 100.0 | 100.0 | 97.3 | 84.8 | 83.3 | 50.0 | 93.0 |
| 2020 | 89.6 | 85.0 | 100.0 | 95.1 | 77.3 | 77.8 | 54.5 | 81.7 |
| 2019 | 82.7 | 83.3 | 88.9 | 91.5 | 62.0 | 58.8 | 26.3 | 74.1 |
| 2018 | 83.4 | 95.5 | 77.8 | 91.1 | 58.3 | 80.0 | 16.7 | 73.7 |
| 2017 | 81.2 | 77.8 | 76.2 | 91.4 | 63.2 | 53.3 | 57.1 | 73.4 |
| 2016 | 84.9 | 70.6 | 75.0 | 92.3 | 74.3 | 81.0 | 40.0 | 77.7 |
| 2015 | 83.0 | 75.0 | 78.1 | 92.4 | 65.0 | 69.6 | 14.3 | 72.6 |
| 2014 | 84.8 | 100.0 | 68.4 | 92.2 | 63.3 | 65.5 | 40.0 | 82.6 |
| 2013 | 83.3 | 85.7 | 75.0 | 92.9 | 54.3 | 70.0 | 57.1 | 76.8 |



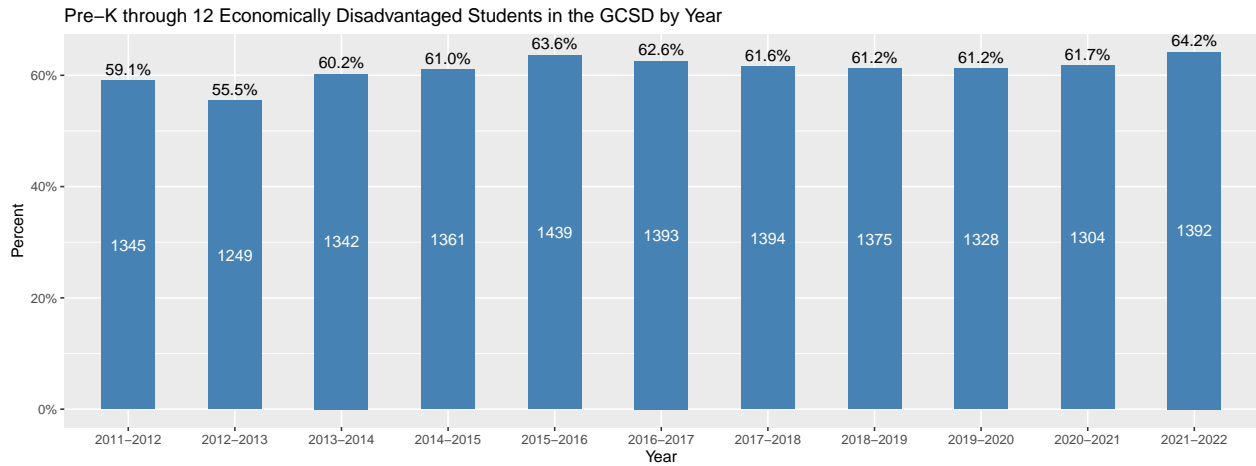


This is the same information as above, but faceted by year rather than student cohort.



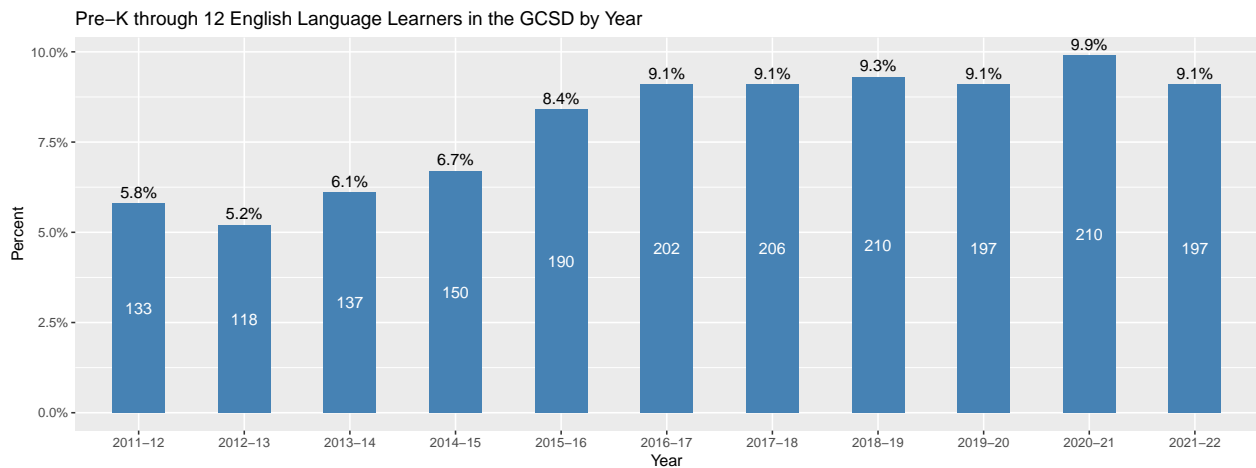
- Source: [NYSED: Geneva High School Graduation Rate Data 4 Year Outcome as of August 2022.](#)

Economically Disadvantaged Students in the Geneva School District



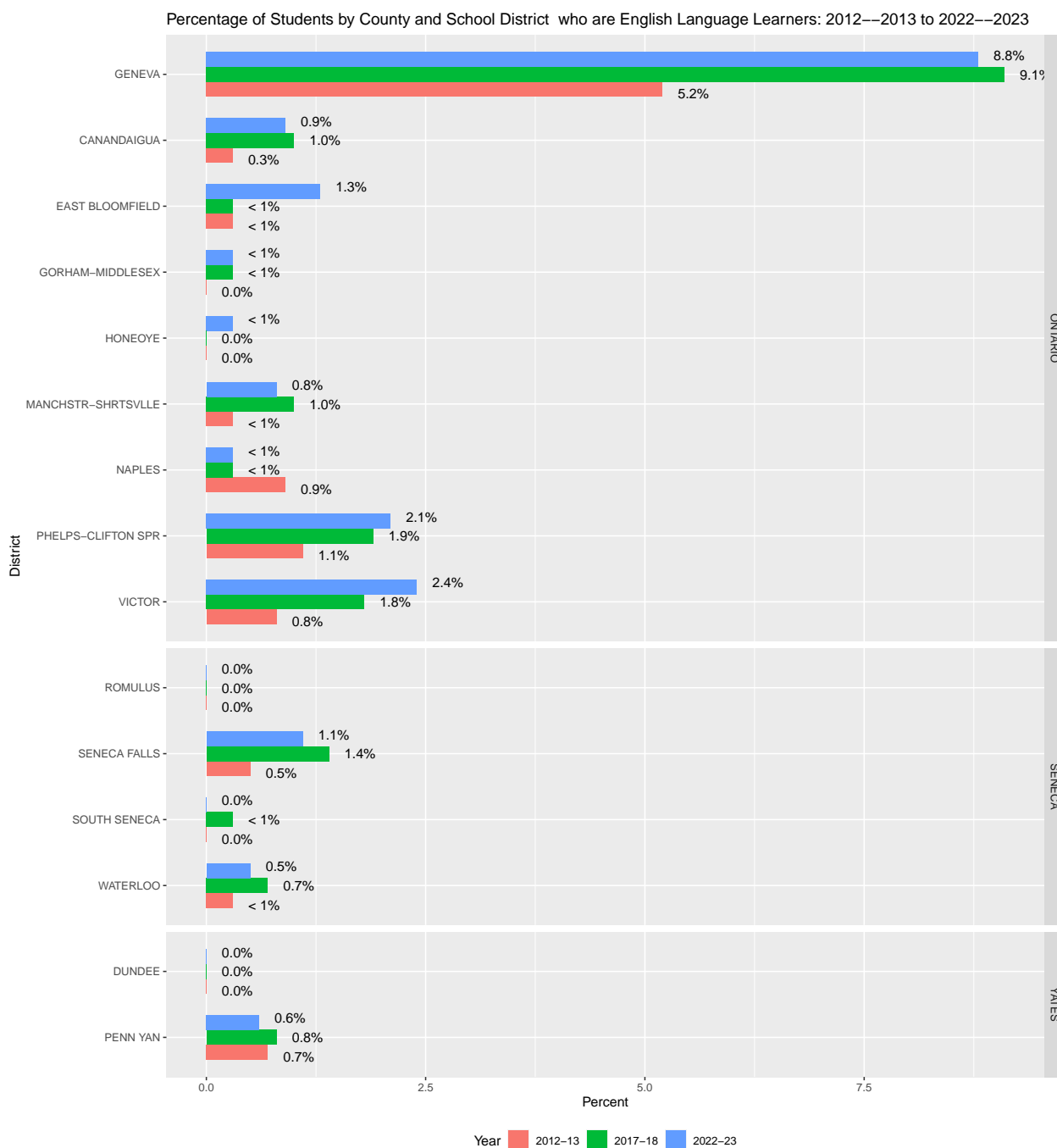
- The number of Economically Disadvantaged Students in Geneva City Schools in grades Pre-K through 12 is shown within each bar.
- Data are reported annually on Basic Educational Data System (BEDS) day each October.
- Source: [NYSED Information and Reporting Services: Public School Enrollment](#).

English Language Learners in the Geneva School District



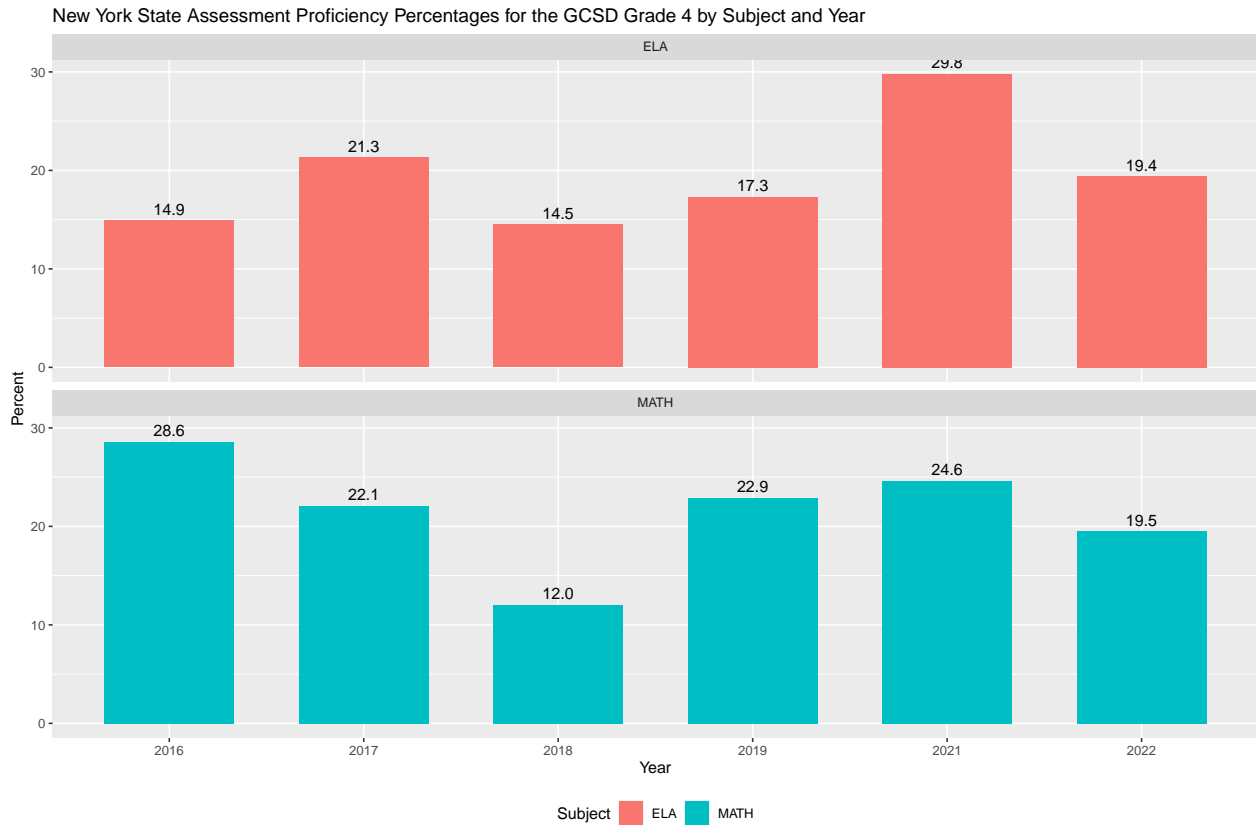
- The number of English Language Learners in Geneva City Schools in grades Pre-K through 12 is shown within each bar.
- Note: These data differ slightly from those reported in 2019; data now include Pre-K students from 2011-2012 (when it first became available) onward.
- Data are reported annually on Basic Educational Data System (BEDS) day each October.
- Source: [NYSED Information and Reporting Services: Public School Enrollment](#).

English Language Learners: Comparison to Other Districts by Year



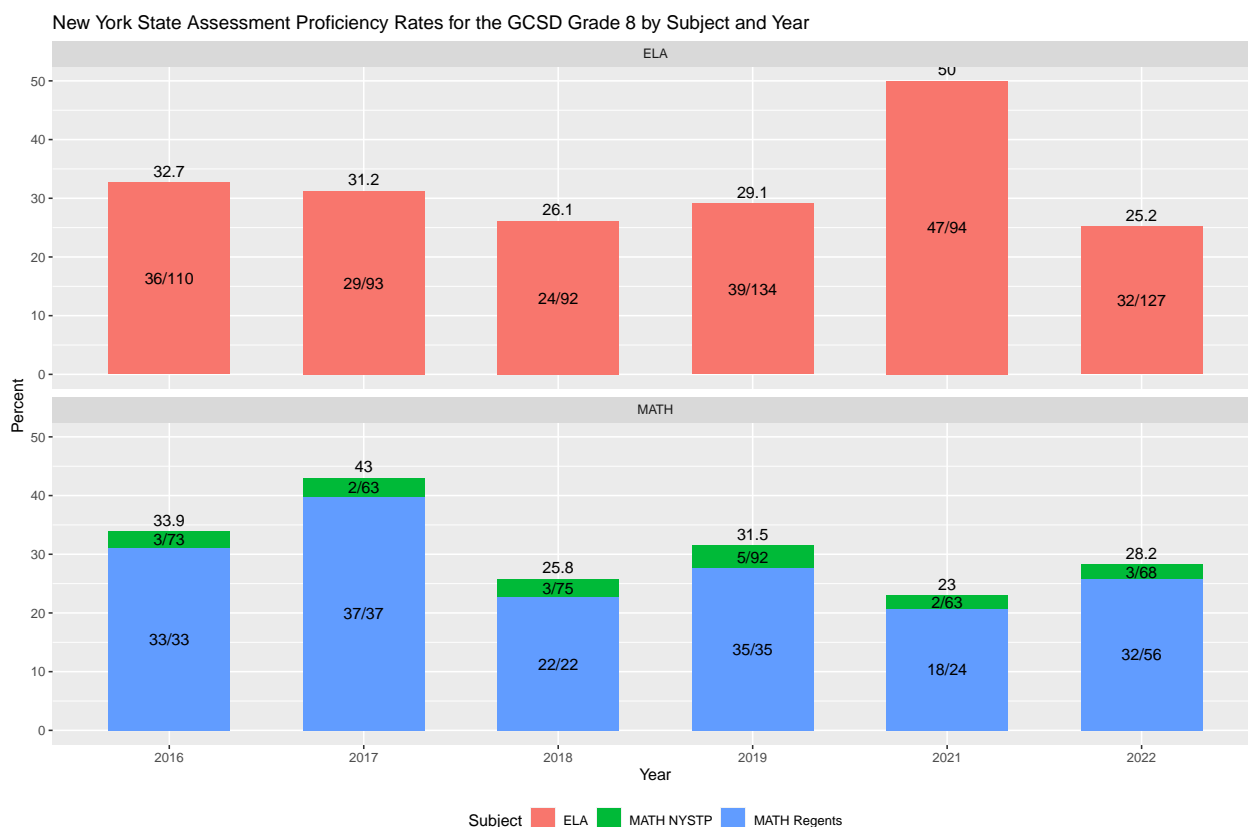
- Historically, the Geneva City School District has had more than three times the percentage of English Language Learners (ELLs) compared to all other school districts in Ontario and neighboring counties.
- Between 2012-13 and 2017-18 there was a dramatic increase in the number of ELLs in Geneva. See page 9 for a partial explanation.
- Note: When the number of ELLs is less than five for a district, NYSED records it as "-" in the public records in order to protect student privacy. In this case in the districts above, the number of ELLs is less than 1% and is indicated as such. Source: [NYSED: Public School Enrollment Data](#).

New York State ELA and Math Assessment Testing in the GSCD Grade 4



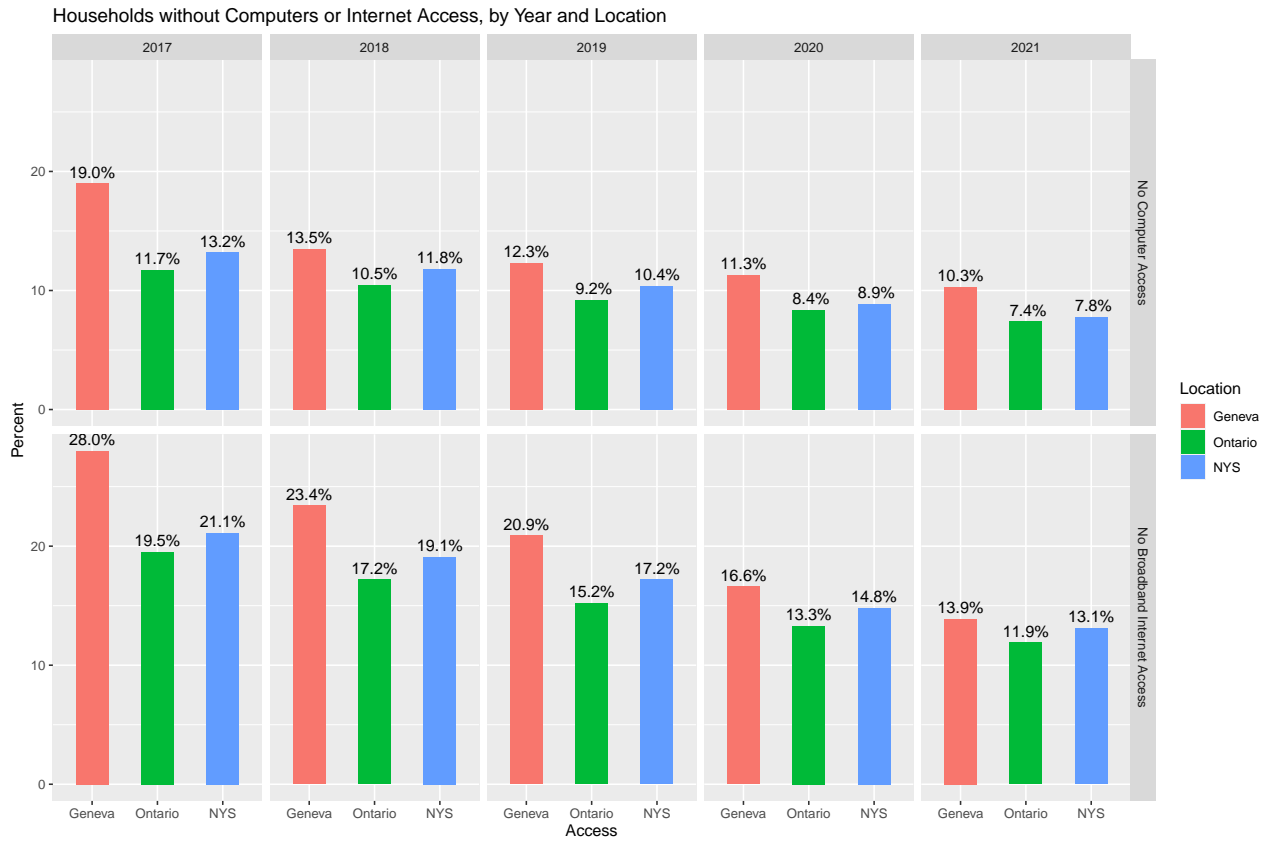
- **Data are for the entire Geneva City School District.**
- **⚠** The 2019–2020 assessments were cancelled because of the COVID-19 pandemic. Again because of the COVID-19 pandemic, in 2020–2021 the participation rates for Grade 4 were 78% (ELA) and 75.9% (Math) and may not be representative of the entire district.
- Sources: See the **School Report Cards** available at the [NYSED: Geneva City School District](https://www.nysed.gov/geneva) webpage in the Data Section and its Archive.

New York State ELA and Math Assessment Testing in the GSCD Grade 8



- **Data are for the entire Geneva City School District.**
- **Mathematics data:** The bar charts include the grade 8 students who took the NYSTP (New York State Testing Program) mathematics exam and the grade 8 accelerated students who took the Regents math test in lieu of the NYSTP.
 Since 2016 90% of students in the district who were proficient in mathematics were in accelerated mathematics classes though they only comprise 25% of the students in their grade.
- The data above the bars are the percentages of **students tested** that were proficient. The ratios within the bars provide the actual number of students who were proficient on the test and the number of students taking the test. For example, looking at the mathematics data for 2017, 43% of those who took either of the mathematics tests were proficient. All 37 of the students taking the Regents Math exam were proficient. Only 2 of 63 students taking the standard NYSTP mathematics test were proficient.
- **⚠** The 2019–2020 assessments were cancelled because of the COVID-19 pandemic. In 2020–2021 the participation rates for Grade 8 were 56.6% (ELA) and 52.4% (Math) and may not be representative of the entire district.
- Sources: See the [School Report Cards](#) available at the [NYSED: Geneva City School District](#) webpage in the Data Section and its Archive.

Households without Computers or Internet Access



- While computer and internet access continue to improve in Geneva, access still lags behind the county and state. Ontario County.
- How has this affected education in the the Geneva School District during the COVID-19 pandemic?

Source: [ACS DP02: Selected Social Characteristics, 2021](#). Note: Data for earlier years may be obtained at this same link using the drop-down **Data Profiles** menu.

Goal 9: The community and schools respect and foster diversity

The Community Has Activities and Events for Families—Availability of Services for Parents

Programs:

Child and Family Resources: [Healthy Families Program](#).

https://cfr.clubexpress.com/content.aspx?page_id=22&club_id=626081&module_id=15119

Choose Health Action Teen (CHAT) Healthy Eating and Living Program—Finger Lakes

Health partnering with schools and others upon request

Maternity and Single Parenting Support Program—Catholic Charities of the Finger Lakes

Educational programs for adults and children—Geneva Public Library

Recreational and educational programs for children and youth—Boys and Girls Club, Girl Scouts, Boy Scouts

[Geneva Reads](https://www.genevareads.org). <https://www.genevareads.org>.

Geneva Counts—Hobart and William Smith Colleges

Parenting education and awareness programs for divorced/separating parents—Child and Family Resources

Walk and Talk—Finger Lakes Health

Big Brothers Big Sisters school- and community-based mentoring

Youth Court—Partnership for Ontario County

Finger Lakes Parents Supporting Children with Autism—Happiness House and Geneva

City School Ontario ARC Youth Recreation Program

City of Geneva's Youth Corps (middle and high school students)

West Street School PAWS nights (for families)

North Street School PAWS nights (for families)

Classes:

Parenting Skills Workshop—Cornell Cooperative Extension

TASC (previously known as GED) in English and Spanish—Finger Lakes Community College

Services:

Mental health counseling for individuals, couples and families—Family Counseling of the Finger Lakes

Hypertrophic Cardiomyopathy Screening—Finger Lakes Health Dine and Discuss- Finger Lakes Health

Support groups:

Single parent support group—Cornell Cooperative Extension

Second Time Around Parents—Cornell Cooperative Extension Finger Lakes Parent Support Network

Child & Family Resource Center

Child Care Resources and Referral Services:

Parent Education and Support

Child Care Provider Services

Support for Community & Business

Family Promise of Ontario County

Advocacy Groups:

NAACP

Ontario County Youth Bureau

Success For Geneva's Children

Legal Assistance of the Finger Lakes

Child Advocacy Center of the Finger Lakes

Online Resources:

[ConnectGeneva](http://www.connectgeneva.com): <http://www.connectgeneva.com> Find resources to meet a variety of community needs.

[The Boys & Girls Club of Geneva](https://bgcgeneva.org): <https://bgcgeneva.org>

The Community Has Activities and Events that are Oriented Toward Families and Celebrate Cultural Diversity

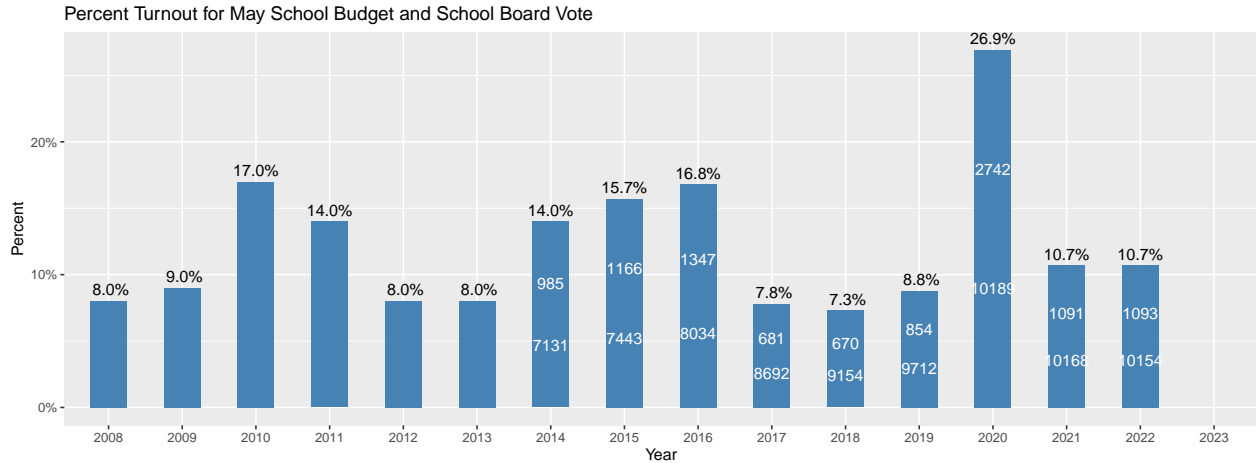
There are many ongoing activities and events in Geneva sponsored by a variety of organizations. The list below is a sampling.

| Spring | Summer |
|---|--|
| Geneva Reads Book Fest Geneva Reads Community Read Month Boys & Girls Club Bowl-a-thon Easter Brunch & Egg Hunt at American Legion St. Francis—St. Stephen’s Old Time Family Fun Festival Arbor Day Tree Planting Child and Family Resources Family Connections Pinwheel Garden Event Festival of Nations at Geneva High School Pulteney Park clean up National Lake Trout Derby YMCA Frostfest Fundraiser Knights of Columbus St. Patrick’s 5k Seneca 7—77.7 mile relay race around Seneca Lake Thrive to Survive Middle Finger 5k Becky Adonna TLC 5k HWS Spring Day of Service | Relay for Life at GHS Geneva Music Festival Latino Fest at Bicentennial Park American Legion Festival Musselman Triathlon Mt. Olive Carnival at Lakefront Fireman’s Parade Geneva BID Cruisin’ Night Jim Dooley Center Cubby Chase 5 & 10k Annual Glorious Garlic Festival St. Paul’s Back to School Youth Block Party Presbyterian Church Strawberry Festival FLX Pride Festival Project Restore Block Party Downtown Geneva Farmer’s Market Geneva Lakefront Summer Concert Series Lakefront Farmer’s Market STEAM Camp—FLCC Geneva Campus Rose Soiré—Geneva Community Projects fundraiser Geneva Half Marathon HWS First-year Orientation Day of Service |
| Fall | Winter |
| HWS Fall Day of Service Child and Family Resources Family Connections Pinwheel Garden Event Veteran’s Day at the Armory Holiday Farmers Market HWS Homecoming Weekend Plein Air Festival FLX Fire & Smoke BBQ Festival Halloween Parade Rylie J’s Boo & Brew 5k Geneva 2020 Annual Community Report Downtown Geneva Farmer’s Market | Mayor’s Tree Lighting Ceremony Child and Family Resources Family Connections Pinwheel Garden Event HWS—Martin Luther King Jr Day of Service Martin Luther King Jr. Annual March Geneva Recreation Complex—Public Ice Skating |

Additional activities are listed on the Chamber of Commerce website: <http://genevanychamber.chambermaster.com/events/calendar?moduleversion=3>

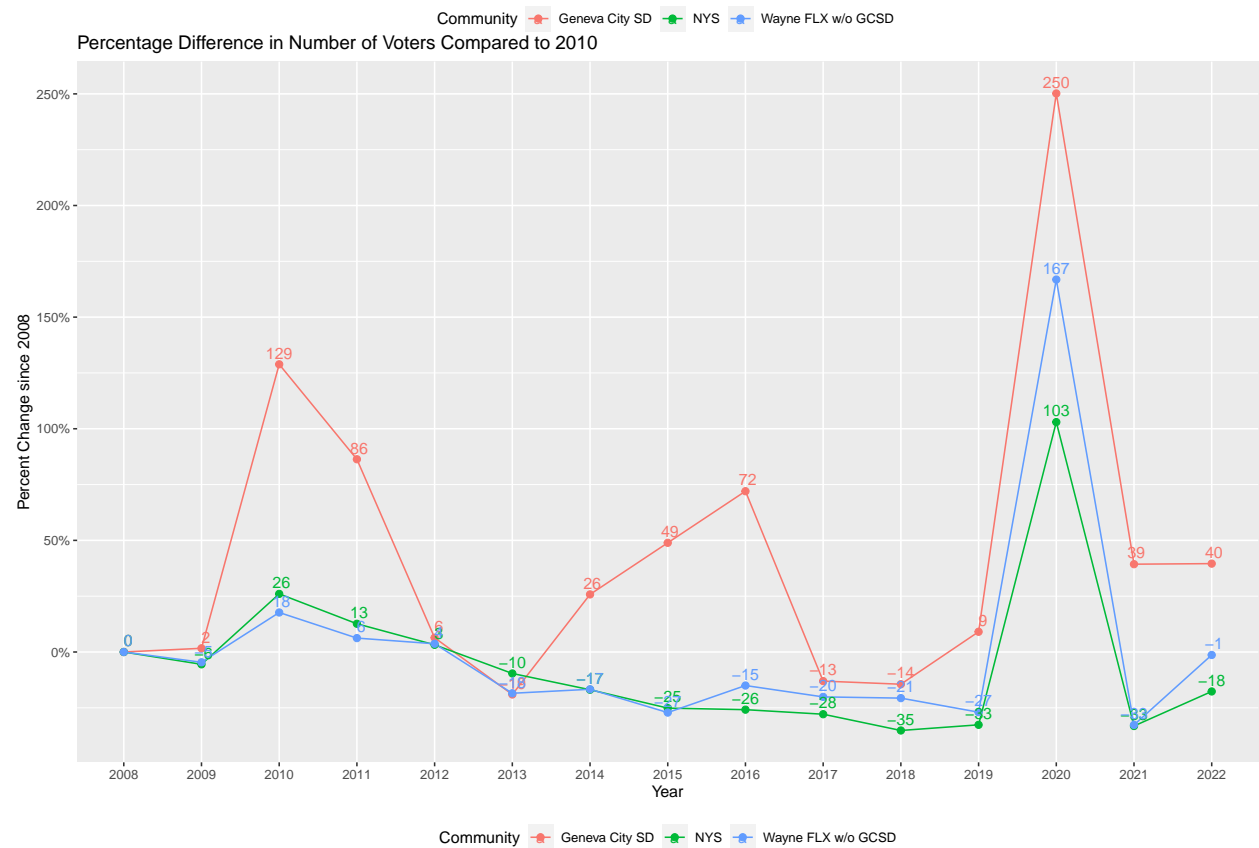
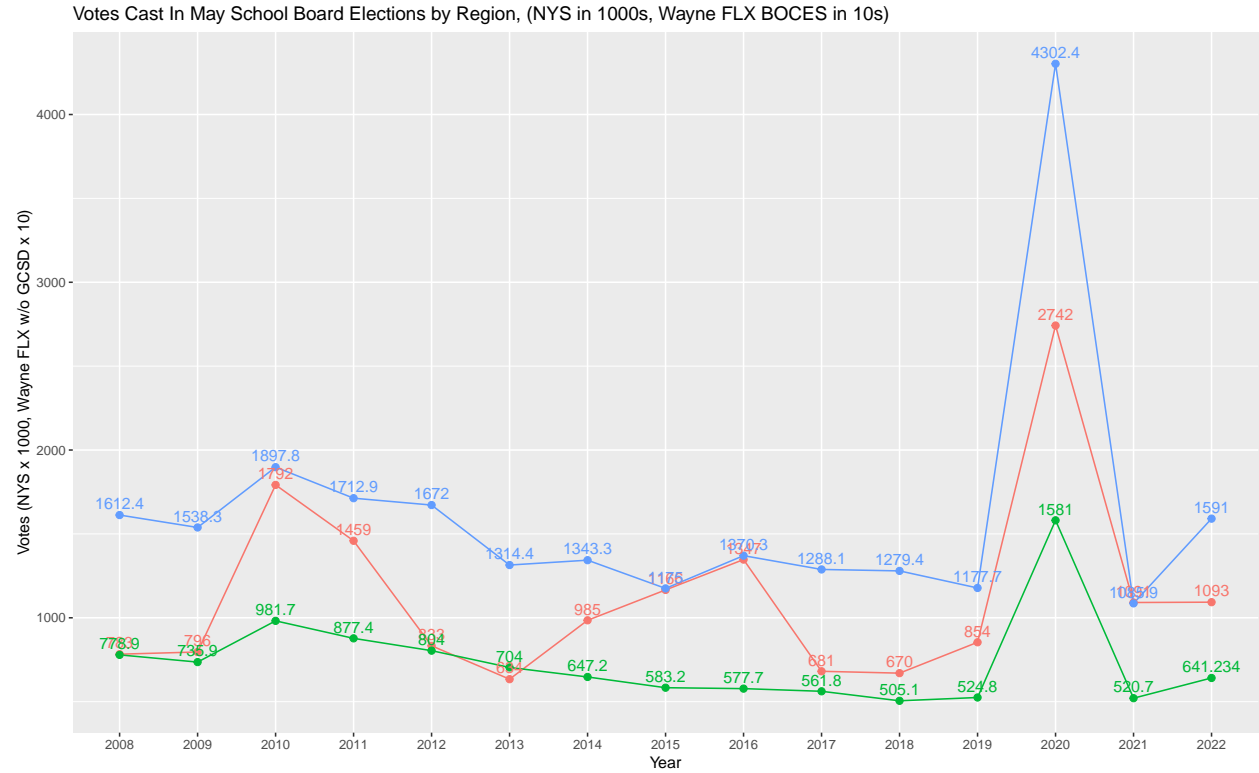
Goal 10: Families exercise their voices and their votes in strengthening the Geneva community

May School Budget Voter Turnout in the Geneva City School District



- Voters eligible to vote in Geneva City School District reside in the City or Town of Geneva in Ontario County, in Benton in Yates County, and only the parts of Waterloo that are in the Geneva School District, in Seneca County.
- Data after 2013 were calculated as follows. The voter turnout (upper value shown within each bar) was obtained from [NYSED: Satewide school District Budget Voting Results](#). The number of eligible voters (lower value within bar) was obtained from the Commissioners of the Ontario County Board of Elections and the percentage voting (above the bar) was then calculated. Data for previous years obtained from [Success for Geneva’s Children 2016 Data Report](#).

May School Budget Voter Comparison of GCSD to NYS and FLX



• Source: [NYSED: Satewide school District Budget Voting Results.](#)

- The Geneva City School District is part of the Wayne-Finger Lakes BOCES District
- The Tax Cap was implemented between the 2011 and 2012 elections.
- Why was turnout so high in 2020? Because of the COVID-19 pandemic, each voter in New York State received a mail-in ballot making it easier to cast one's vote.
- Voter turnout in Geneva is 40% higher than it was in 2010 in contrast to New York State and the rest of the Wayne Finger Lakes District where it has actually decreased.

Expanded Data Links

The list below gives the actual url for each online source used in this document. Both the link in blue and the associated url will take you to the relevant resource. Many of the U.S. Census (ACS) and New York State links can be easily modified to provide previous years' data by changing the occurrence of 2019 in the link to an earlier year.

- [The Annie E. Casey Foundation KIDS COUNT Data Center](https://datacenter.kidscount.org/data/tables/8446-child-population-by-race-and-age-group#detailed/1/any/false/37/68,69,67,12,70,66,71,13|30/17077): <https://datacenter.kidscount.org/data/tables/8446-child-population-by-race-and-age-group#detailed/1/any/false/37/68,69,67,12,70,66,71,13|30/17077>
- [ACS Demographic Characteristics for Geneva, 2019](https://data.census.gov/cedsci/table?q=0400000US36_0500000US36069_1600000US3628640&d=ACS%205-Year%20Estimates%20Data%20Profiles&tid=ACSDP5Y2019.DP05): https://data.census.gov/cedsci/table?q=0400000US36_0500000US36069_1600000US3628640&d=ACS%205-Year%20Estimates%20Data%20Profiles&tid=ACSDP5Y2019.DP05
- Sources: [ACS Selected Social Characteristics for Geneva, 2020](https://data.census.gov/cedsci/table?q=0400000US36_0500000US36069_1600000US3628640&d=ACS%205-Year%20Estimates%20Data%20Profiles&tid=ACSDP5Y2020.DP02): https://data.census.gov/cedsci/table?q=0400000US36_0500000US36069_1600000US3628640&d=ACS%205-Year%20Estimates%20Data%20Profiles&tid=ACSDP5Y2020.DP02
- Source: [ACS Poverty Status in the Past 12 Months, TableID: S1701](https://data.census.gov/cedsci/table?q=0400000US36_0500000US36069_0600000US3606928640,3606928651&tid=ACSST5Y2019.S1701&q=ACSST5Y2012.S1701): https://data.census.gov/cedsci/table?q=0400000US36_0500000US36069_0600000US3606928640,3606928651&tid=ACSST5Y2019.S1701&q=ACSST5Y2012.S1701
- [ACS Selected Economic Characteristics, 2019](https://data.census.gov/cedsci/table?q=&d=ACS%205-Year%20Estimates%20Data%20Profiles&table=DP03&tid=ACSDP5Y2018.DP03&g=0400000US36_1600000US3628640): https://data.census.gov/cedsci/table?q=&d=ACS%205-Year%20Estimates%20Data%20Profiles&table=DP03&tid=ACSDP5Y2018.DP03&g=0400000US36_1600000US3628640
- [ACS Economic Characteristics for Ontario County, 2018](https://data.census.gov/cedsci/table?q=&d=ACS%205-Year%20Estimates%20Data%20Profiles&table=DP05&tid=ACSDP5Y2018.DP05&g=0400000US36_0500000US36069): https://data.census.gov/cedsci/table?q=&d=ACS%205-Year%20Estimates%20Data%20Profiles&table=DP05&tid=ACSDP5Y2018.DP05&g=0400000US36_0500000US36069
- [ACS Selected Social Characteristics for Geneva, 2018](https://data.census.gov/cedsci/table?q=&d=ACS%205-Year%20Estimates%20Data%20Profiles&table=DP02&tid=ACSDP5Y2018.DP02&y=2018&g=0400000US36_1600000US3628640): https://data.census.gov/cedsci/table?q=&d=ACS%205-Year%20Estimates%20Data%20Profiles&table=DP02&tid=ACSDP5Y2018.DP02&y=2018&g=0400000US36_1600000US3628640
- [ACS Selected Social Characteristics for Ontario County, 2018](https://data.census.gov/cedsci/table?q=&d=ACS%205-Year%20Estimates%20Data%20Profiles&table=DP02&tid=ACSDP5Y2018.DP02&y=2018&g=0400000US36_0500000US36069): https://data.census.gov/cedsci/table?q=&d=ACS%205-Year%20Estimates%20Data%20Profiles&table=DP02&tid=ACSDP5Y2018.DP02&y=2018&g=0400000US36_0500000US36069
- [ACS Poverty Status in the Past 12 Months of Individuals by Sex by Educational Attainment for Geneva, 2018](https://data.census.gov/cedsci/table?q=&d=ACS%205-Year%20Estimates%20Data%20Profiles&table=DP04&tid=ACSDP5Y2018.DP04&g=0400000US36_1600000US3628640&lastDisplayedRow=21&vintage=2018&mode=): https://data.census.gov/cedsci/table?q=&d=ACS%205-Year%20Estimates%20Data%20Profiles&table=DP04&tid=ACSDP5Y2018.DP04&g=0400000US36_1600000US3628640&lastDisplayedRow=21&vintage=2018&mode=
- [ACS Employment Characteristics of Families, 2019](https://data.census.gov/cedsci/table?q=EMPLOYMENT%20CHARACTERISTICS%20OF%20FAMILIES%20New%20York%20State%20Ontario%20County,%20NY%20%20%20Geneva,%20NY&t=Employment&g=0400000US36_0500000US36069_1600000US3628640&tid=ACSST5Y2019.S2302): https://data.census.gov/cedsci/table?q=EMPLOYMENT%20CHARACTERISTICS%20OF%20FAMILIES%20New%20York%20State%20Ontario%20County,%20NY%20%20%20Geneva,%20NY&t=Employment&g=0400000US36_0500000US36069_1600000US3628640&tid=ACSST5Y2019.S2302
- [ACS Households and Families, 2019](https://data.census.gov/cedsci/table?q=ACSST1Y2019.S1101&g=0400000US36_0500000US36069_0600000US3606928640&tid=ACSST5Y2019.S1101): https://data.census.gov/cedsci/table?q=ACSST1Y2019.S1101&g=0400000US36_0500000US36069_0600000US3606928640&tid=ACSST5Y2019.S1101
- [Geneva 2020 Community Report, 2018](https://www.hws.edu/about/pdfs/Geneva2020_community_report2018.pdf): https://www.hws.edu/about/pdfs/Geneva2020_community_report2018.pdf
- [Geneva 2020 Community Report, 2016](https://www.hws.edu/about/pdfs/Geneva2020_community_report2016.pdf): https://www.hws.edu/about/pdfs/Geneva2020_community_report2016.pdf
- [Table 7: Live Births by Mother's Age and Resident County, New York State 2020](https://www.health.ny.gov/statistics/vital_statistics/2020/table07.htm): https://www.health.ny.gov/statistics/vital_statistics/2020/table07.htm
- [Table 9: Live Births by Race/Ethnicity and Resident County, New York State 2020](https://www.health.ny.gov/statistics/vital_statistics/2020/table09.htm): https://www.health.ny.gov/statistics/vital_statistics/2020/table09.htm

- [Table 11: Low Birthweight Live Births by Mother's Age and Resident County New York State 2020:](https://www.health.ny.gov/statistics/vital_statistics/2020/table11.htm) https://www.health.ny.gov/statistics/vital_statistics/2020/table11.htm
- [Table 45: Infant Deaths, Neonatal Deaths, Post Neonatal Deaths and Perinatal Mortality by Resident County, New York State, 2020:](https://www.health.ny.gov/statistics/vital_statistics/2020/table45.htm) https://www.health.ny.gov/statistics/vital_statistics/2020/table45.htm
- [Table 30: Total Pregnancies and Teenage Pregnancies by Type and Resident County New York State, 2020:](https://www.health.ny.gov/statistics/vital_statistics/2020/table30.htm) https://www.health.ny.gov/statistics/vital_statistics/2020/table30.htm.
- [Table 53: City and Village Profiles - Selected Statistics for Cities and Villages over 10,000 Population, New York State 2020:](https://www.health.ny.gov/statistics/vital_statistics/2020/table53.htm) https://www.health.ny.gov/statistics/vital_statistics/2020/table53.htm
- [Table 55: Live Births by Minor Civil Division, 2007–2020:](https://www.health.ny.gov/statistics/vital_statistics/2020/table55.htm) https://www.health.ny.gov/statistics/vital_statistics/2020/table55.htm
- [Success for Geneva's Children 2014 Data Report:](https://www.hws.edu/academics/service/pdf/data_report2014.pdf) https://www.hws.edu/academics/service/pdf/data_report2014.pdf
- [Success for Geneva's Children 2016 Data Report:](https://www.hws.edu/academics/service/pdf/data_report2016.pdf) https://www.hws.edu/academics/service/pdf/data_report2016.pdf
- [Success for Geneva's Children 2021 Data Report:](https://math.hws.edu/~mitchell/SuccessForGenevasChildren2019.pdf) <https://math.hws.edu/~mitchell/SuccessForGenevasChildren2019.pdf>
- [Success for Geneva's Children Data Books:](https://docs.google.com/spreadsheets/d/1NVCmIRnCQ43xrwbZQaKn_n2EmKxTdyFobZSEH1eNyd0/edit#gid=1349520264) https://docs.google.com/spreadsheets/d/1NVCmIRnCQ43xrwbZQaKn_n2EmKxTdyFobZSEH1eNyd0/edit#gid=1349520264
- [NYSED: Geneva High School Graduation Rate Data 4 Year Outcome as of August 2020:](https://data.nysed.gov/gradrate.php?instid=800000040589&year=2020&cohortgroup=0) <https://data.nysed.gov/gradrate.php?instid=800000040589&year=2020&cohortgroup=0>
- [Success for Geneva's Children Data Books:](https://docs.google.com/spreadsheets/d/1NVCmIRnCQ43xrwbZQaKn_n2EmKxTdyFobZSEH1eNyd0/edit#gid=1966588765) https://docs.google.com/spreadsheets/d/1NVCmIRnCQ43xrwbZQaKn_n2EmKxTdyFobZSEH1eNyd0/edit#gid=1966588765
- [NYSED Information and Reporting Services: Public School Enrollment:](http://www.p12.nysed.gov/irs/statistics/enroll-n-staff/home.html) <http://www.p12.nysed.gov/irs/statistics/enroll-n-staff/home.html>
- [NYSED: Satewide school District Budget Voting Results:](http://www.p12.nysed.gov/mgtserv/votingresults/) <http://www.p12.nysed.gov/mgtserv/votingresults/>

Many Thanks

We would like to thank the following groups and institutions for their assistance in providing information for this report. Without their help this document would not have been possible.

- The Geneva City School District, in particular,
 - The Office of Central Registration
 - The Office of Health Services
 - The Office of Innovative Programming
 - The Office of Student Services
 - The Board Clerk for the Geneva City School District
- The Geneva City Police Department
- The Ontario County Department of Social Services
- The Ontario County Department of Health and Human Services
- The Ontario County Board of Elections
- Hobart and William Smith Colleges
 - The Center for Community Engagement and Service-Learning
 - The Office of Communications
- Child & Family Resources, Inc.
- Safe Harbors of The Finger Lakes
- Jim Dooley Center for Early Learning
- Office of the Geneva City Manager

